

**THE ROMAN**

**EMPERORS**

*and*

**DANUBE**

**WINE ROUTE**

**For You**



Cultural route  
of the Council of Europe  
Itinéraire culturel  
du Conseil de l'Europe

COUNCIL OF EUROPE



CONSEIL DE L'EUROPE







**ATLAS**

your adriatic host

# Baranja

*special location  
for wine tasting*



Baranja is situated in the endless lowland between Dunav and Drava. In the heart of Kneževi vineyards the secrets of superb vine keepers and winemakers are kept in Belje Cellars dating back to year 1562. The story of Belje wines starts at its own vineyards with beautiful landscapes streaked with almost 8 km of wine roads.

## **Special group offer:**

- Expert-led tours of the vineyards
- Tasting of wines and local specialties (cheese, sausage, kulen)
- Vineyard picnic with folklore ensemble or band
- Vineyard weddings
- Vineyard events
- Grape harvest
- Group dinners

[www.atlas-croatia.com](http://www.atlas-croatia.com)

 [sales@atlas-croatia.com](mailto:sales@atlas-croatia.com)





# EXPLORE THE ROMAN EMPERORS AND DANUBE WINE ROUTE

LOCATED IN THE MIDDLE AND LOWER DANUBE REGION, THE ROMAN EMPERORS AND DANUBE WINE ROUTE IS PART OF THE EUROPEAN NETWORK OF CULTURAL ROUTES.

Visitors will easily discover the great value of the sites along the most exciting and second longest European river. You can try the overwhelmingly beautiful long-distance experience of crossing the entire area from the Adriatic Sea to the Danube Delta (the Black Sea), or you can spend your holidays discovering only parts of the Route – it's up to you.

Whether you're hiking, driving, cycling, travelling by boat or train, or combining the lot, the cross-border journey along the ancient Roman Danube Limes will reveal the outstanding natural beauty of the river Danube and hidden historic and archeological treasures, still mostly unknown in the western and northern Europe – some of the archeological sites have been discovered,

excavated and scientifically researched only recently, during the last two decades. You will be amazed by the abundance and quality of evidence of ancient Roman presence in this part of Europe.

Viticulture here is over two thousand years old. The wines produced in the region were among the best in Europe in the 19th century. Vineyards will keep beckoning you to come and taste local dishes and wines along the way. Wine tasting is offered in perfectly restored and modernized wineries, many of them boasting hundreds of years of grape growing tradition. Definitely taste the big brands but never forget the small, family-run wine cellars – they are an experience in itself! Local and regional food and wine will convince even the most skeptical gourmets and wine enthusiasts.

If you are still not convinced, consider the unbeatable hospitality and friendliness of the people living along the Route. So, pack up, come and enjoy our Route and take home unforgettable memories.



# CULTURAL CENTER OF VITICULTURE AND ENOLOGY



**Adress: 9 „Vasil Levski“ str.  
Suhindol, Bulgaria**

**E-mail: [seb@wineforum-bg.net](mailto:seb@wineforum-bg.net)**

**Tel: +359 886 475 577, Facebook:  
[culturalcenterofenologyandviticulture](https://www.facebook.com/culturalcenterofenologyandviticulture)**

**WINE-TASTINGS, TRAININGS,  
MASTER CLASSES, WINE TOURS**

# CONTENTS

WELCOME (TEXT)	3
ORIENTATION MAP OF THE ROUTE	6
WHAT'S ON? (events and festivals)	8
DISCOVER:	16
Life and lifestyle of the Roman emperors	16
Architecture	18
Art and Culture	20
Religion	22
Military achievements	26
Wines from the Danube region	30
IMPRESSIVE NATURAL SETTINGS	38
ENJOY THE DELICIOUS CUISINES ALONG THE ROUTE	40
List of restaurants	
HOW TO TRAVEL	46
Biking along the Route	47
Main airports & bus and train stations along the Route	49
WHERE TO STAY	60
List of accommodation	





- Life and lifestyle of the roman emperors
- Everyday life art and culture
- Military achievements
- Architecture
- Religion in roman culture
- Wines from the danube region

Croatia	<p>1</p> <p>Colonia Pietas Iulia Pola Pollentia Herculanea Pula and Brijuni (27 - 68 AD)</p>	<p>2</p> <p>Colonia Iulia Iader Zadar and Nin (250 BC - 300 AD)</p>	<p>3</p> <p>Spalatum Split (293 - 305 AD)</p>	<p>4</p> <p>Narona Vid (200 BC - 620 AD / Augusteum: 10 BC - 400 AD)</p>
Serbia	<p>6</p> <p>Felix Romuliana Gamzigrad and Zajecar (297 - 441 AD)</p>	<p>7</p> <p>Diana Eisernes Tor - Kladovo (100 - 600 AD)</p>	<p>8</p> <p>Viminacium Kostolac and Požarevac (20 - 400 AD)</p>	<p>9</p> <p>Mediana Niš (306 - 442 AD)</p>
Romania	<p>11</p> <p>Colonia Ulpia Traiana Augusta Dacica Sarmizegetusa (160 - 270 AD)</p>	<p>12</p> <p>Tropaeum Traiani Adamklissi (109 - 587 AD)</p>	<p>13</p> <p>Histria Istria (657 BC - 600)</p>	<p>14</p> <p>Alba Iulia Alba Iulia (106 - 275 AD)</p>
Bulgaria	<p>16</p> <p>Durostorum Sistira (29 - 600 AD)</p>	<p>17</p> <p>Sexaginta Prista Russe (70 - 600 AD)</p>	<p>18</p> <p>Roman Legio Camp Novae Swischtow (45 - 613 AD)</p>	<p>19</p> <p>Kaleto Belogradtschik (1st - 19th Century)</p>



## Travel like the Romans did

Over time, the Roman Empire created a very complex network of roads used daily by traders, travellers and soldiers. New travel habits created new needs for travel maps. Romans had one-dimensional maps, with information on distances and times required for travelling. Along the road lines they used to put markings with travel distances and times

(mille passuum, literally "a thousand paces", where each pace was two steps, probably about 1,479 metres). Apart from expressing distances in miles, they would draw red stair-like lines between the towns, where each stair marked one day of travel. This way, travellers knew not only the distances they needed to cover, but also how long it would take them to get where they wanted.

**5**  
Aquae Iasae  
Varaždinske toplice  
(700–400 AD)

**1**  
Ilok Wine  
Region

**2**  
Baranja Wine  
Region

**10**  
Sirmium  
Sremska Mitrovica  
(10 BC – 582 AD)

**3**  
Fruška Gora  
Region

**4**  
South Banat  
Region

**5**  
Negotin Wine  
Region

**6**  
Morava  
Region

**15**  
Alburnus Maior  
Roşia Montană  
(106 – 271 AD)

**7**  
Dobrogea / Dobrudja /  
Dobruja Hills

**8**  
Muntenia and  
Oltenia Hills

**9**  
The Danube  
Terraces

**20**  
Ulpia Oescus  
Gigen  
(70 – 378 AD)

**10**  
Vidin Area /  
North-West

**11**  
Ruse / North-East  
and Black Sea

**12**  
Plevna, Veliko  
Tanovo / North-Central

# EVENTS ALONG THE ROUTE



Blue Week - tourism festival celebrating the International Danube Day. Consisted out of several mini events that are taking place in different countries along the Danube, each focusing on specific topic, characterizing key tourism and cultural products of Danube Region.





## JANUARY

## Zadar

[www.mas-zadar.hr](http://www.mas-zadar.hr)

2

**Workshops for children  
(November and January)**

Workshops related to the customs of ancient Rome.

## Ilok

[www.ilockipodrumi.hr](http://www.ilockipodrumi.hr)

1

**Vinko's Fest (Vinkovo)  
(22 January)**

The celebration of Vinko's Feast in the winegrowing hills of Ilok and Srijem is an old custom that takes place every year on 22 January.

## FEBRUARY

## Narona

[www.a-m-narona.hr](http://www.a-m-narona.hr)

4

**Carnival in Metković  
(February)**

Traditional manifestation.

## Negotin

[www.toon.org.rs](http://www.toon.org.rs)

5

**St Tryphon Day (14th  
February)**

St Tryphon is traditional manifestation in Negotin Municipality organized due to the fact that this area is one of the most famous wine regions in Serbia. Event is organized in Rajac pimonice, in authentic, traditional atmosphere of the Region.

## Kladovo

[www.tookladovo.rs](http://www.tookladovo.rs)

7

**St Tryphon Day – Grape and  
Wine Growers (14th February)**

Every year, on February 14th, the Fruit and Wine Growers Association in Kladovo, in the spirit of the Orthodox tradition, celebrates their day – St. Tryphon. The Tourist Organization helps in choosing the best products in the categories of brandies and wines at this celebration, and the competition always ends with a party organized for all the winners.

## MARCH

## Alba Iulia

[www.romaniatourism.com/  
alba-iulia.html](http://www.romaniatourism.com/alba-iulia.html)

14

**Alba Iulia City Race (March)**

The main goal of Alba Iulia City Race is to attract more tourists to the city at the beginning of each year, in March.

## Bucharest and Ilfov

[www.romaniatourism.com/  
bucharest.html](http://www.romaniatourism.com/bucharest.html)
**Bucharest International Boat  
Show (March)**

Is a 5 day event being held from 4th March to the 8th March at the Romaero Baneasa. This event showcases product from Marine&Boat industry.

## Ruse

[www.ruse-bg.eu](http://www.ruse-bg.eu)

17

**March Music Days Interna-  
tional Festival (March)**

Will host a vast selection of concerts and performances by a variety of international artists in the biggest Danube city in Bulgaria.

## APRIL

## Pula and Brijuni

[www.brijuni.hr](http://www.brijuni.hr)  
[www.pulainfo.hr](http://www.pulainfo.hr)

1

**The educational underwater  
trail – NP Brijuni (mid April –  
mid October)**

The educational underwater trail in Verige Bay on the southern side of Veli Brijun offers unique experience of visiting natural and archaeological sites of the exceptionally rich and well preserved marine world of Brijuni National Park. The approximately 500 metres long trail is not particularly demanding. In fact, it has been designed to appeal to users of all ages who can swim and use a diving mask and the snorkel. The tour lasts 45 minutes and includes swimming and underwater sightseeing at small depths using an audio guide and educational panels set up at various experiential points. Visitors are introduced to the exceptionally valuable contents that may only be seen

by means of diving into the sea such as the well-known hydro-archaeological site - a part of the ancient complex of a sumptuous Roman villa from the first century submerged under the sea due to rising sea levels.

**Sremska Mitrovica**  
[www.tosmomi.rs](http://www.tosmomi.rs)

10

### **SM Jazz & Blues Festival (first week of April)**

SM Jazz / Blues Spring Fest was founded five years ago under the patronage of the town of Sremska Mitrovica. Nowadays it represents a significant music event and one of the major cultural events in Sremska Mitrovica.

## **MAY**

**Nin**  
[www.nin.hr](http://www.nin.hr)

2

### **The traditional pilgrimage to Our Lady's Island**

(May and August)

The appearance of Our Lady of Zečevo, and the traditional pilgrimage to the nearby Island of Zečevo - which during low tide in fact becomes part of the mainland - is connected with an interesting story which takes us back to the very beginning of the 16th century. The Turks, in an act of revenge because of the defeat they suffered in Nin, set fire to the Church and Monastery on this island, killed

all the monks and took the Statue of Our Lady. The legend has it, that they threw it into the sea and that Our Lady 'swam' to the shore in Nin and in 1516 She appeared to the widow Jelena, sent a message to the people and all this was confirmed by the Statue shedding tears.

### **The Church Holiday of Our Lady of Zečevo (May)**

On 5th May 1516, on the island of Zečevo, Our Lady appeared to the widowed shepherdess Jelena Grubišić. Thus Nin became an important Virgin Mary sanctuary in which many worshippers gather in May every year.

**Split**  
[www.visitsplit.com](http://www.visitsplit.com)

3

### **Diocletian's guard - change of guard (May, September)**

From 10 am to 9 pm - every day. The guard shift takes place each day at 12 PM (Peristyle) during which the Emperor Diocletian appears with 6 soldiers, and takes the opportunity to greet the mass and holds the appropriate speech, inviting the guests to his Palace.

**Osijek**  
[www.osijek.hr](http://www.osijek.hr)

2

### **"Dani vina i turizma", the tourism and wine festival (May)**

Wine and tourism days take place every first weekend in May. It is the final festival of

the previous four smaller wine festivals that take place in the wine regions around the city, Baranja and Erdut on the Danube river and Feričanci and Djakovo on the slopes of the Krndija mountain. It takes place in the old town in the Holy Trinity Square where all the wine producers from the region show their products. A part of the festival is the Fish-paprikash Festival, the Croatian national championship in preparing one of the region's favourite traditional dishes, the spicy and red from minced paprika fish stew.

**Sremska Mitrovica**  
[www.tosmomi.rs](http://www.tosmomi.rs)

10

### **The Night of the Museums (first week of May)**

'The Night of Museums' is a cultural event which is organized by the museums and cultural institutions and the museums are open until late at night (or precisely from 6 p.m. to 2 a.m.). The purpose of the event is introducing cultural institutions to individuals, as well as presenting the museums and galleries in a more interesting and unusual way.

**Vršac**  
[www.vrsacturizam.r](http://www.vrsacturizam.r)

4

### **Jazztronic (May)**

Festival of jazz and blues music, which brings together fans of improvised music, marked the Vrsac city on the

cultural map in the region and our country.

**Sremski Karlovci**  
[www.karlovci.org.rs](http://www.karlovci.org.rs)

3

### **The Night of Museums (middle of May)**

Cultural event in which local museums open their doors during the night to the visitors.

**Bucharest and Ilfov**  
[www.romaniatourism.com/bucharest.html](http://www.romaniatourism.com/bucharest.html)

### **Bucharest International Jazz Competition & Festival (May)**

Is not only a 100% jazz festival, is a festival about competition, concerts, workshops and jam sessions.

**Alba Iulia**  
[www.romaniatourism.com/alba-iulia.html](http://www.romaniatourism.com/alba-iulia.html)

14

### **Apulum Roman Festival (May)**

Detailed reenactments of gladiator fights, Dacian - Roman wars, ancient rituals, Thracian games, nymph dances as well as medieval dances. During the Apulum Roman Festival visitors can take part of antique themed workshops for archery, blacksmithing, gastronomy, leather working, bone carving or sword skills.

## **JUNE**

**Pula and Brijuni**  
[www.brijuni.hr](http://www.brijuni.hr)  
[www.pulainfo.hr](http://www.pulainfo.hr)

9

### **The Days of Antiquity - Pula Superiorv (June)**

Cultural and culinary event held at three major ancient locations in the city: Forum Square, Portarata Square and Pula Arena.

**Nin**  
[www.nin.hr](http://www.nin.hr)

5

### **Festival of the Sun and Light in the Church of the Holy Cross (June)**

This event –unique, just as this Church called 'the smallest Cathedral in the world' – is based on the evaluation of the astronomical and the architectural importance of the Church of the Holy Cross, a Pre-Romanesque building with a ground plan in the shape of a cross and a dome having special characteristics. Namely each side of the church has an oval opening and its construction and position in relation to the position of the Sun throughout the year –as explained by the scientist Mladen Pejaković – depends on the winter and summer solstice; spring and fall equinox and it was made in order to serve as a sundial and a calendar. For this reason, watching the playing of light and shadow is an extraordinary experience for children and adults, scientists and all visitors.

**Nin's školijska (Sokol festival) and Festival of Salt  
(June and August)**  
 Culinary events.

**Tours and demonstrations of salt gathering - Museum of Salt, Nin (June and August)**  
 Educational tours showing the history of salt and its usage with special attention given to the Flower of Salt, affectionately called the "caviar of salt" due to its unique flavour, composition and manner of harvesting

**Varaždinske Toplice**  
[www.toplice-vz.hr](http://www.toplice-vz.hr)

5

### **Aquafest Varaždinske Toplice (Last weekend in June)**

Cultural, culinary and entertainment event held on the archeological site Aquae lasae.

### **Spring in Andautonia, Šćitarjevo (June)**

Cultural manifestation held every year, last year's topic were pets in ancient Rome, includes making of jewelry, ceramics and perfume.

**Kladovo**  
[www.tookladovo.rs](http://www.tookladovo.rs)

7

### **Danube Day (29th June)**

Celebration of the Danube Days is a traditional event for majority of towns on the Danube and, with the help of the Water Directorate and the relevant Ministry, it has been celebrated for several years in

a row in Kladovo. The Danube Days celebration in Kladovo is a special experience since the programme is directed to the youngest ones in a most beautiful manner, in cooperation with the elementary schools in Kladovo Municipality.

**Niš**  
[www.visitnis.com](http://www.visitnis.com)

9

### **Days of St. Emperor Constantine and Empress Helen (1-5 June)**

Every year, the city of Niš organizes numerous athletic, scientific and cultural events to remember its most famous citizens, Emperor Constantine the Great and his mother, Empress Helen.

**Belogradchik**  
[www.belogradchik.biz](http://www.belogradchik.biz)

19

### **Folklore Festival 'From Timok to Iskar' (June)**

'From Timok to Iskar' Folklore Festival promotes folklore traditions of Northwestern Bulgaria, passing them on to the younger generation and inviting all guests to Belogradchik Municipality to experience them.

**Svishtov**  
[www.svishtov.bg](http://www.svishtov.bg)

18

### **Eagle on the Danube Festival (June)**

The tenth edition of 'Eagle on the Danube' Festival of Ancient Heritage will host over 300

re-enactors from Italy, Poland, Hungary, Germany, Romania and Bulgaria in the ancient Roman camp Novae near Svishtov.

## **JULY**

**Salona**  
[www.solininfo.com](http://www.solininfo.com)

3

### **Solin's cultural summer (July – September)**

Cultural and entertainment events (performances, concerts, drama plays)

**Narona**  
[www.a-m-narona.hr](http://www.a-m-narona.hr)

4

### **Roman night in Narona – Archeological museum of Narona (July)**

Archeological manifestation with educational programs.

Brudetijada in Opuzen (July)  
Culinary event including competition in preparing traditional fish specialities.

**Belogradchik**  
[www.belogradchik.biz](http://www.belogradchik.biz)

19

### **International Festival at Kadaboaz Pass (July)**

The International Festival at Kadaboaz Pass is a reproduction of the historic fights of 1876 when Bulgarians, Serbs, Russians and Montenegrins joint forces against the Ottoman rule.

## **AUGUST**

**Nin**  
[www.nin.hr](http://www.nin.hr)

2

### **The traditional pilgrimage to Our Lady's Island (May and August)**

The appearance of Our Lady of Zečevo, and the traditional pilgrimage to the nearby Island of Zečevo – which during low tide in fact becomes part of the mainland – is connected with an interesting story which takes us back to the very beginning of the 16th century. The Turks, in an act of revenge because of the defeat they suffered in Nin, set fire to the Church and Monastery on this island, killed all the monks and took the Statue of Our Lady. The legend has it that they threw it into the sea and that Our Lady 'swam' to the shore in Nin and in 1516 She appeared to the widow Jelena, sent a message to the people and all this was confirmed by the Statue shedding tears.

### **Nin's školijada (Sokol festival) and Festival of Salt (June and August)**

Culinary events.

### **Tours and demonstrations of salt gathering – Museum of Salt, Nin (June and August)**

Educational tours showing the history of salt and its usage with special attention given to the Flower of Salt, affectionately called the "caviar of salt" due to its unique flavour, composition and manner of harvesting

**Split**  
[www.visitsplit.com](http://www.visitsplit.com)

3

### The Days of Diocletian (August)

In the period from August 16 - 19 Diocletian Days 2014 will take Split back to the time when famous Roman emperor Diocletian walked the city. Roman legions will align on the city streets and squares, the emperor Diocletian in carriage followed by the legions will pass from the Promenade to the Peristyle where Diocletian's co-rulers with their families will greet the gathered crowd. The sounds of fanfare, drums and Roman music will be heard throughout the city.

**Salona**  
[www.solininfo.com](http://www.solininfo.com)

3

### Romance in Salona (August)

Manifestation designed with the aim of encouraging visitors to evening walks through Salona, consists of 4 themed nights.

### Ancient mosaic workshop (August)

Workshop in cooperation with the Art Academy from Split in the Tusculum garden in Salona

**Narona**  
[www.a-m-narona.hr](http://www.a-m-narona.hr)

4

### Boat marathon in Metković (Second Saturday in August)

Amateur sporting competition which involves the racing of ladje (vessels native to the

Lower Neretva River which flows through the Republic of Croatia)

**Osijek**  
[www.osijek.hr](http://www.osijek.hr)

2

### „Pannonian Challenge“, extreme sports and music festival (August)

Every mid-August for five days the left bank of the Drava river, the beach and the swimming pools of Copacabana recreation centre, hosts the biggest music and extreme sports event in the east of Croatia, the Pannonian Challenge festival. The competitions are held in the categories of skate boarding, BMX cycling and roller blading and the musical programme is a combination of rock and electro sounds. It attracts many tourists, mostly in their 20's and 30's from all around central and south eastern Europe.

**Sremska Mitrovica**  
[www.tosmomi.rs](http://www.tosmomi.rs)

10

### Wine Manifestation – Honoring the Probus (19th August)

Festival organized in order to celebrate birth of Marcus Aurelius Probus and moment in which he planted first vine on slopes of Fruška Gora.

**Niš**  
[www.visitnis.com](http://www.visitnis.com)

9

### Nišville, International Jazz Festival (August)

Nišville has become the leading and most visited jazz festival

in SouthEastern Europe with a total visit of 100,000 people for 4-days festival. Nišville concept from the beginning, except the “traditional” forms of jazz, was based on the fusion of this stream with the ethnic traditions of various parts of the world, particularly the Balkans.

**Bucharest and Ilfov**  
[www.romaniatourism.com/bucharest.html](http://www.romaniatourism.com/bucharest.html)

### George Enescu Festival (August)

Is a well-known music festival which had the official opening on 4th September 1958, merely three years after George Enescu's passing.

### The 5th Summer Well Festival (August)

Will take place on August 8 to 9 on the Field Stirbey. Summer Well format consisting of five bands each day. Amongst the bands that will perform there are John Newman, The 1975, Placebo, Miles Kane, Tom Odell.

**Tulcea**  
[www.romaniatourism.com/tulcea.html](http://www.romaniatourism.com/tulcea.html)  
[www.rowmania.ro](http://www.rowmania.ro)

7

### Rowmania (August)

Rowmania is a festival of boats and canoes held in Tulcea. This festival is a initiative by Ivan Patzaichin, gold medalist in 5 Olympic games, and the main goal is to promote ecotourism in Romania, to enjoy and protect nature.

Vidin  
[www.vidin.bg](http://www.vidin.bg)

10

### Medieval Festival Budin (August)

This year for the third time around the Baba Vida Fortress will host the Bdin Medieval Festival, presenting the culture, armament, clothing and wine of the Middle Ages.

## SEPTEMBER

Ilok  
[www.turizamilok.hr](http://www.turizamilok.hr)

1

**Ilok Grape Harvest** has been traditionally held since 1962. in first week of september. The event ensues from an old Syrmia custom known as "Pudarina", where commoners gathered before the beginning of the harvest to guard the vineyards, prepare the work and celebrate a good year and yield, and of course, to socialise. Visitors enjoy the daytime and evening cultural entertainment and wine-gastro programmes, ranging from preserving customs in the vineyards, professional and fun workshops and promotions, to exhibitions, sports events, folklore and concert events and of course, the accompanying eno-gastro-nomic offer, mostly found in the old town core – the fortress and partly vineyards.

Split  
[www.visitsplit.com](http://www.visitsplit.com)

3

### Dioctetian's guard – change of guard (May, September)

From 10 am to 9 pm – every day. The guard shift takes place each day at 12 PM (Peristyle) during which the Emperor Dioctetian appears with 6 soldiers, and takes the opportunity to greet the mass and holds the appropriate speech, inviting the guests to his Palace.

Salona  
[www.solininfo.com](http://www.solininfo.com)

3

### From the Solin's pot (First Week of September)

Culinary event including competition in preparing dishes in old mill Gašpina Mlinica.

Osijek  
[www.osijek.hr](http://www.osijek.hr)

2

### „Dani piva“, beer festival (September)

Full name of the festival is "The Days of the First Croatian Beer" or short "Beer days". The reason for this is the proud tradition of beer producing that dates back to 1697. The beer festival takes place in mid-September in the so-called Crown Fortress on the left bank of the Drava river. It is the biggest traditional music and beer festival in eastern Croatia that in seven days attracts some 20.000 visitors. Because of the lively music and good food people call it the "biggest wedding party" in the region.

Vršac  
[www.vrsacturizam.rs](http://www.vrsacturizam.rs)

4

### The Grapes Ball (third week-end in September)

The manifestation which is known among the people as "The Grapes Ball", has a long tradition, and it is held in every year on the third weekend in September.

Sremski Karlovci  
[www.karlovci.org.rs](http://www.karlovci.org.rs)

10

### Grape Harvest (end of September)

Cultural event that lasts several days, during which various activities are organized: workshops, concerts and exhibition. All in order to celebrate wine culture.

Negotin  
[www.toon.org.rs](http://www.toon.org.rs)

5

### Mokranjac Days (September)

Starting from 1966, every September music holiday dedicated to greatest Serbian composer Stevan Stevanović Mokranjac takes place in his birth city Negotin.

## NOVEMBAR

Zadar  
[www.mas-zadar.hr](http://www.mas-zadar.hr)

2

### Workshops for children (November and January)

Workshops related to the customs of ancient Rome.



## DECEMBER

Osijek  
[www.osijek.hr](http://www.osijek.hr)

2

**„Advent u Osijeku“, Christmas festival and fair (December)**

During December don't miss the festivities of Advent in Osijek. Enjoy the Christmas themed exhibitions and concerts in the galleries, museums and churches, go for a drive in the cheerful Christmas Tram and do not miss the special offer in restaurants and hotel packages. The main events of the holiday season are the Christmas fairs. The one that will last longest is the biggest – Advent in Trda (the old town) located in the magically decorated baroque Holy Trinity Square.

Alba Iulia  
[www.romaniatourism.com/alba-iulia.html](http://www.romaniatourism.com/alba-iulia.html)

14

**National Day (December)**

The most notable event that took place in Alba Iulia was undoubtedly the Great Union of all the Romanian provinces on 1st of December 1918, resulting in the state of Romania. Every year on December 1st there are interesting events in which tourist can take part: laying funeral wreaths on different objectives or observing the change of guards.

## REGULAR

1

Pula and Brijuni  
[www.brijuni.hr](http://www.brijuni.hr)  
[www.pulainfo.hr](http://www.pulainfo.hr)

**Exhibition “Viticulture and Olive Oil Production in Istria During the Roman Period” (Regular)**

The exhibition “Viticulture and Olive Oil Production in Istria During the Roman Period” in the subterranean section of the amphitheater, is dedicated to the production of high-quality olive oil and wine, products that were from Roman times amongst the most important factors in the Istrian economy. The procedures for obtaining oil from olives are shown through the reconstructed Roman facilities used for such purposes, olive mills and presses.

Zadar  
[www.mas-zadar.hr](http://www.mas-zadar.hr)

2

**Glassbowling workshops – Museum of Ancient Glass (regular)**

Glassforming technique demo workshops - attendants are instructed how to make ancient glass replicas. (no. of attendants - 50 to 60)

**Lampworking (beadmaking) workshops – Museum of Ancient Glass (regular)**

Attendants are instructed how to make glass jewelry with the usage of gas burners. (no. of attendants - 5 to 10)

Požarevac  
[www.topozarevac.rs](http://www.topozarevac.rs)

8

**Ljubičevo Equestrian Games (various Dates)**

This event is an equestrian tournament held annually in Požarevac. For all those who love horse riding sports and equestrian skills this event will be quite a spectacle. Day before competition, all the participants of the Games parade through the central streets in Požarevac.

## UPON REQUEST

Varaždinske Toplice  
[www.toplice-vz.hr](http://www.toplice-vz.hr)

5

**Roman Pottery Workshops (upon request)**

Pottery workshop for children.



## Introduction

# 1. LIFE AND LIFESTYLE OF THE ROMAN EMPERORS:

## SITES WITH DIRECT AND DOCUMENTED ASSOCIATIONS WITH ROMAN EMPERORS

The normal, everyday life of a Roman emperor resembled the daily routine of a modern president. The emperor was concerned with command of the military, hearing law cases, officiating at religious ceremonies and organizing construction projects. The imperial palaces, like the complex at Sirmium near the Danube frontier, were the locations of these activities. The destinations on the Route bring back to life the dynamic events and accomplishments of the Roman emperors who lived and worked here. From Diocletian's retirement villa at Split, an outstandingly well preserved imperial palace, to the evocative remains of the emperor Galerius' massively fortified villa at Felix Romuliana, the monumental remains of Roman architecture are a vibrant reminder of the limitless resources the emperors had at their disposal for shaping the destiny of the empire. Traian's bridge at Drobeta and Kladovo, the first permanent crossing of the Danube, guaranteed access for the Roman armies to the newly acquired province of Dacia. The bridge connected with another engineering masterpiece, the Roman military road along the south bank of the Danube which is commemorated in the inscription on Traian's Tablet. Likewise connected with Roman military might, the carved panels of Roman battle scenes from Tropaeum Traiani illustrate rare scenes of the emperor himself directing his troops on and off the battlefield. Today, 48 (out of the original 54), metopes - sculpted bas-reliefs depicting major events of Traian's military campaign - are exhibited in the Archaeological Museum at Adamclisi.

## VISIT:


**Diocletian's Palace and Salona, Split, (293-305 AD);**

The Emperor's Palace is a World Heritage Site which forms the urban core of modern Split.


**Felix Romuliana, Gamzigrad and Zaječar, (297 - 441 AD);**

Massive fortifications, imperial villas, temples and a granary, built by Emperor Galerius. UNESCO World Heritage S


**Sirmium, Sremska Mitrovica, (1st century BC – 582 AD);**

One of the major imperial capitals, with a palace used by the Emperors Diocletian and Constantine in the Late Roman Empire.

## DON'T MISS:

**While in Split and Salona:**
**Archeological Museum,**

Zrinsko-Frankopanska 25, 21000 Split, ☎ +385 21 329340, [www.armus.hr](http://www.armus.hr), [www.mdc.hr/split-arheoloski/eng/index.html](http://www.mdc.hr/split-arheoloski/eng/index.html)

**Opening hours:** June – Sep Mon – Sat 9.00 – 14.00, 16.00 – 20.00, Sun closed; Oct – May Mon – Fri 9.00 – 14.00, 16.00 – 20.00, Sat 9.00 – 14.00, Sun closed

**Archeological Complex of Salona and Tusculum,**

Put starina bb, Manastirine, 21210 Solin, ☎ +385 21 211538,

[www.mdc.hr/split-arheoloski/eng/FS-dislocirani.html](http://www.mdc.hr/split-arheoloski/eng/FS-dislocirani.html)

**Opening hours:** May – Oct Mon – Fri 7.00 – 19.00, Sat 9.00 – 19.00, Sun 9.00 – 13.00; Nov – Apr Mon – Fri 9.00 – 15.30, Sat 9.00 – 14.00, Sun closed

**While in Zaječar:**

**National Museum,** Moše Pijade 2, 19000 Zaječar, ☎ +381 19 422930,

[www.muzejzajecar.org](http://www.muzejzajecar.org)

**Opening hours:** Mon, Sat 8.00 – 16.00, Tue – Fri 8.00 – 18.00, Sun closed, Sat. Nov. – Mar. closed

**Archeological Site Felix**

**Romuliana,** Gamzigrad, 19000 Zaječar, ☎ +381 19 450019, Guided tours ☎ +381 64 2809485 (Dir. Bora Dimitrijević),

[www.muzejzajecar.org](http://www.muzejzajecar.org)

**Opening hours:** daily Apr. – Oct. 8.00 – 20.00, Nov. – Mar. 8.00 – 16.00

**While in Sremska Mitrovica:**
**Archeological Museum Srem (with Lapidarium),**

Trg Svetog Stefana 15, 22000 Sremska Mitrovica, ☎ +381 22 623245, <http://tosmomi.rs/en/turistic-ka-ponuda/kultura/muzej-srema>

**Opening hours:** Sat – Mon 7.00 – 15.00, Tue – Fri 7.00 –

## Did you know?

That the native Dalmatian emperor Diocletian in retirement responded to an offer to return to power with the comment, "If you could only see the cabbages raised by my own hands at Salona, you would not think that the offer tempted me." (Aurelius Victor Liber de Caes. 39,6)

That the Emperor Constantine the Great was going to make Sirmium (Sremska Mitrovica, Serbia) the capital of the Eastern Roman Empire until he changed his mind in A.D. 325 and founded Constantinopolis (modern Istanbul, Turkey).

20.00, branch Vuka Karadžića 3 (thematic exhibitions): Mon – Fri 7.00 – 15.00

**Sirmium Imperial Palace (Carska palata Sirmijuma),**

Pivarska 2, 22000 Sremska Mitrovica, ☎ +381 22 618817, [www.carskapalata.rs/imperial-palace.html](http://www.carskapalata.rs/imperial-palace.html)

**Opening hours:** daily 9.00 – 17.00

## INFORMATION:

**Tourist Information Center**

„Peristil“, Peristil bb, 21 000 Split, ☎ +385 21 345606, [www.visitsplit.com](http://www.visitsplit.com)

**Tourist office Zaječar,**

Svetozara Markovića 2, 19000 Zaječar, Serbia, ☎ 19 421521, [www.zajecar.info](http://www.zajecar.info)

**Tourist Organization of the City of Sremska Mitrovica,**

Svetog Dimitrija 10, 22000 Sremska Mitrovica, ☎ +381 22 618275, [www.tosmomi.rs](http://www.tosmomi.rs)



## Introduction

# 2. ARCHITECTURE

## SITES WITH WELL PRESERVED AND PRESENTED MONUMENTS OF ROMAN ARCHITECTURE

In the process of creating their vast Empire the Romans left behind an extensive corpus of buildings which have been admired for centuries for their magnificence and functional efficiency. The most significant imperial building types, like entertainment centers, palaces and bridges, are presented in the Route. Some of the largest exterior spaces were incorporated in the sports arenas the Romans called amphitheaters like the well preserved example in Pula. The Pula amphitheater, known today as the Arena, sat 20,000 spectators and is still in use today. Further down the Adriatic coast Salona, the capital city of Roman Dalmatia, also boasts the preserved remains of public entertainment facilities in an amphitheater and theater. The Romans also built more private structures, like the luxurious and richly decorated villa on the island of Veli Brijun (near Pula), which prospered from the olive oil trade. In the Danube corridor, at Mediana just outside of the emperor Constantine's birthplace in Niš, another elaborately decorated villa was in use during the reigns of Constantine's sons, just after his death.

## VISIT:



**Mediana, Niš, (306 – 442 AD);**  
Birthplace of Emperor Constantine the Great, who issued the milestone Edict of Milan



**Amphitheatre and Villa Rustica,**  
Pula and Brijuni, (50 BC – 400 AD);  
Major Roman port for trade with Italy and villa estates producing olive oil and wine for export.



**Tropaeum Traianum, Adamclisi,**  
(109 – 587 AD); A victory monument, depicting the highlights of one of the Emperor Traian's campaigns against the Dacians.

## DON'T MISS:

### While in Niš:

**National Museum Niš, Generala**  
Milojka Lešjanina 14, 18000 Niš,  
☎ +381 18 248189,  
☎ +381 18 246622,  
<http://narodnimuzejnis.rs>

**Opening hours:** Tue – Fri 10.00 – 17.00,  
Sat, Sun 10.00 – 15.00, Mon closed;

**Archeological site Mediana,**  
Bulevar Cara Constantina bb,  
18000 Niš, ☎ +381 18 550433,

<http://narodnimuzejnis.rs>

**Opening hours:** see National Museum

### While in Pula:

**Pula Arena, Scalierova ul. 30,**  
52100 Pula, ☎ +385 52 219028,  
[www.ami-pula.hr/en/collections-on-other-locations/amphitheater/amphitheater/](http://www.ami-pula.hr/en/collections-on-other-locations/amphitheater/amphitheater/)

**Opening hours:** daily 25th of  
Act – 31st of March 9.00 – 17.00,  
Apr 8.00 – 20.00, May, Sep 8.00  
– 21.00, June 8.00 – 21.30, July/  
Aug 8.00 – 24.00, 1st of Oct –  
24th of Oct 9.00 – 19.00

**National Park Brijuni, Brionska 10,**  
52212 Fažana, Croatia,  
☎ +385 52 525882, 525888,  
☎ +385 52 521124, 521367,  
[www.brijuni.hr/en/](http://www.brijuni.hr/en/)

### While in Adamclisi:

**Tropaeum Traiani/Archeo-  
logical Museum Complex of  
Adamclisi, 907010 Adamclisi,**  
☎ +40 241 614562,  
[www.cimec.ro/arheologie/tropaeum/cetateaeen/index.html](http://www.cimec.ro/arheologie/tropaeum/cetateaeen/index.html),  
[www.cjc.ro/engleza/adamen-1.html](http://www.cjc.ro/engleza/adamen-1.html)  
**Opening hours:** daily 8.00 – 20.00  
(peak season); Wed – Sun 9.00 –  
17.00, Mon, Tue closed (low season)

## INFORMATION:

**Tourist Information Center Niš,**  
Vožda Karađorđa 5, 18000 Niš,  
☎ +381 18 521321,  
[www.visitnis.com](http://www.visitnis.com),  
[www.ni.rs/tourism.html](http://www.ni.rs/tourism.html)

**Info branch „Fortress“:** Tvrdjava,  
18000 Nis, ☎ +381 18 250222

**Pula Tourist Board (Info Point),**  
Forum 3, 52100 Pula,  
☎ +385 52 219197,  
[www.pulainfo.hr](http://www.pulainfo.hr)

## Did you know?

That the Pula amphitheater (Croatia) is one of the six largest Roman amphitheatres in existence today and one of the best preserved. The Pula amphitheater is unusual because access to the seating area (cavea) was accomplished through stairways in the distinctive side towers. It was enlarged for the gladiator fights in 79 AD for 23,000 spectators and had 20 entrances. Today it is used for the Pula film festival and musical events and can seat 5,000 people.

That the Venetians “mined” the building stone from the Salona amphitheater to build the Church of Santa Maria delle Salute in Venice.

**Opening hours:** daily 8.00 – 22.00  
(summer), 9.00 – 16.00 (winter)

**Travel in Constanta, B-dul**  
Tomis 124, 12388 Constanta,  
☎ +40 244 944194,  
[www.travelinconstanta.com/en/](http://www.travelinconstanta.com/en/)  
**Adamclisi Municipality, Strada**  
Traian 39, 907010 Adamclisi,  
[www.adamclisi.judetul-constant.ro](http://www.adamclisi.judetul-constant.ro),  
[www.primaria-adamclisi.go.ro](http://www.primaria-adamclisi.go.ro)

**Tabula Traiana, Kladovo, (105**  
AD); A Roman memorial plaque commemorating the completion of Traian's military road, built by the famous Apollodorus of Damascus.

**While in Kladovo:**  
**National Archeological Museum**  
Derdap, Trg Kralja Petra bb,  
19320 Kladovo, ☎ +381 19 803900,  
[www.narodnimuzej.rs](http://www.narodnimuzej.rs)

**Opening hours:** Tue – Sun  
10.00 – 17.00, Mon closed

**Tourist Organization of**  
**Kladovo, Dunavska 16a, 19320**  
Kladovo, ☎ +381 19 801690,  
<http://tookladovo.rs>, [www.kladovo.rs](http://www.kladovo.rs)



## Introduction

# 3. EVERYDAY LIFE, ART AND CULTURE

## INCLUDING CIVIC LIFE/POLITICAL AND SOCIAL ASPECTS OF ROMAN CULTURE, ECONOMIC LIFE/COMMERCE UNDER THE RULE OF THE EMPERORS

Roman everyday life was not just a matter of subsistence and survival, it was also all about local self government and comfort in the form of recreational facilities. Central to public life in a Roman town were recreation the public baths (thermae) for socializing, leisure and exercise. Government functions, including the administration of uniform Roman law took place in the forum areas, with adjacent law courts (basilicas) and commercial shops (tabernae). The Forum- Capitolium complex at Zadar provide all the basic facilities for a semi-autonomous Roman colony. Baths are featured at Andautonia, while at Ulpia Sarmizegethusa the whole range of urban structures, from forum to baths and residential insulae have been identified.. Histria, on the Black Sea, not only shows its beginning in Hellenistic Greek urbanism in the region but also had public baths and upper class residences. Urban villas were also part of other Danubian city landscapes, like in the late Roman residence at Oescus with its exceptional mosaic (now in the Regional Museum at Pleven) which illustrates a lost play of the Greek playwright Menander. In the economic life of the Empire the spoils of war from Dacian Sarmizegethusa and gold from the mines at Alburnus Major helped to finance the Emperor Traian's new forum and markets in Rome. Today at Alburnus Major the local mining museum, Muzeul Mineritului, shows mining tools and technologies from antique to modern times. Along the Danube the flourishing commerce in wine and olive oil along the Danube was controlled by elements of the Roman fleet based at Sexaginta Prisca. Where the Roman army went, so too went the habit of wine consumption.

The archaeological museums along the Route hold unexpected and sometimes unique examples of Roman art like the fine bust of the emperor Caracalla's wife Plautilla from Salona (now in the Zagreb Archaeological Museum); the porphyry head of the emperor Galerius from Felix Romuliana in the Zaječar museum is one of few known for the whole Roman Empire.



## VISIT:



**Ulpiu Oescus, Gigen**, (70 – 378 AD); Imposing Roman public buildings, a rare mosaic with a scene from previously unknown comedy of Menander where the Emperor Constantine built a bridge across the Danube.



**Colonia Ulpiu Traiana Augusta Dacica**, Sarmizegetusa (160 – 270 AD); A Roman provincial capital with impressive temples, an amphitheater, and glassblowing workshops.



**Alburnus Maior**, Roșia Montană, (106 – 271 AD); Experienced miners from Dalmatia were brought in to dig the gold in the Emperor Traian's mines.



**Histria, Istria**, (657 BC – 600 AD); Founded by Greek settlers it was one of their most important colonies on the Black sea coast.

## DON'T MISS:

**While in Gigen:**

**Regional Historical Museum**, ul. Stoyan Zaimov 3; 5800 Pleven, ☎ +359 64 822692 (Secretary), [www.plevenmuseum.dir.bg](http://www.plevenmuseum.dir.bg)

**Opening hours** (museum/site): 1st of Apr. – 31st of Oct. Mon – Sat. 9.30 – 12.00, 12.30 – 18.00, Sun closed

**While in Sarmizegetusa:**

**Archeological Site Ulpiu Traiana Sarmizegetusa**, Main road (DN 68), 337415 Sarmizegetusa village, Hunedoara County, ☎ +40 254 776418, [www.mcdr.ro](http://www.mcdr.ro)

**Opening hours**: daily 8.00 – 20.00

**Archeological Museum**, Main road (DN 68), 337415 Sarmizegetusa village, Hunedoara County, ☎ +40 254 776418, [www.mcdr.ro](http://www.mcdr.ro)  
**Opening hours**: Tue – Sun 9.00 – 17.00, Mon closed

**While in Roșia Montană:**

**Muzeul Mineritului Aurifer Roșia Montană**, Str. Principală, 178, 517615 Roșia Montană, ☎ +40 258 783165,

[www.alba.djc.ro/ObiectiveDetalii.aspx?ID=2184](http://www.alba.djc.ro/ObiectiveDetalii.aspx?ID=2184)

**Opening hours**: Mon – Fri 8.00 – 14.00; guided tours (duration: 90 min.)

**While in Istria:**

**Histria Museum**, Loc. Histria, 907155 Istria, Constanta County, ☎ +40 241 614562, [www.cimec.ro/web-histria/index\\_eng.htm](http://www.cimec.ro/web-histria/index_eng.htm)

**Opening hours**: May – Sep daily 9.00 – 20.00, Oct – Apr Wed – Sun 9.00 – 17.00, Mon, Tue closed.

## Did you know?

Roman miners, colonists from the Illyrian South Dalmatia, who worked at Alburnus Maior, dug out ca. 110 tons of gold and an unknown amount of silver. Until 271 AD, these treasures were shipped from Alburnus Maior via the Mureș to the Danube and then to Rome.

The Roman emperors were also fond of Egyptian antiquities. Diocletian, like the first emperor Augustus, imported Egyptian funerary art into his palace where two sphinxes are still on display next to his Mausoleum and by the Jupiter temple.

**Museum of National History and Archaeology**,

Piața Ovidiu 12, Constanta, ☎ +40 241 618763, [www.minac.ro](http://www.minac.ro)

**Opening hours**: May – Sep daily 9.00 – 20.00, Oct – Apr Wed – Sun 9.00 – 17.00, Mon, Tue closed.

## INFORMATION:

**Roșia Montană Commune**, Principală 184, 517615 Roșia Montană, ☎ +40 258 783101, [www.primariarosiamontana.ro](http://www.primariarosiamontana.ro)

**Travel in Constanta**, B-dul Tomis 124, 12388 Constanta, ☎ +40 244 944194, [www.travelinconstantia.com/en/](http://www.travelinconstantia.com/en/)

**(Locations with displays of Roman art and culture-overlaps with artifacts relating to Everyday Life):**

Iader, Archaeological Museum; Split, Archaeological Museum; Kladovo/Iron Gate, Archaeological Museum; Sexaginta Prisca, Regional Historic Museum; the National Museum, Zaječar. The Roman tombs at Silistra and Viminacium feature well preserved and restored fresco painting.



## Introduction

# 4. RELIGION IN ROMAN CULTURE:

Roman religion represents a complex body of diverse beliefs in both the private and public spheres. Of primary importance to Roman maintenance of law and order in the provinces of the Empire was the export of two major cults, that of Jupiter as the primary divinity in the Roman state hierarchy and the worship of Roma and Augustus, the so called imperial cult. Altars dedicated to Jupiter by Roman and non-Romans populate the museums from Dalmatia and throughout the Danube corridor. Loyalty to the emperor among the conquered provincials was fostered through the temples of the imperial cult, notably in the well preserved examples of the Augusteum in Narona (Vid, Croatia) with 20 huge marble statues of imperial deities, or at Pula and Aenona. Jupiter and his companion deities, forming the Capitoline triad, were worshipped in the monumental temple which formed the architectural climax to the forum at Zadar. The conflict between the imperial cult and early Christianity produced many of the first Christian martyrs. That was one of the reasons why the new religion of Christianity is well represented in the Roman Emperors Route. Additionally the Illyrian and first Christian emperor Constantine gave great impetus in the Danube region and along the Adriatic to the rapid growth of congregations and the building of churches with the issuance of the circular letter known as the "Edict of Milan". Salona and Sirmium rank as some of the most influential centers of Early Christianity. Healing and religion were combined at the thermal spring at Aquae lasae. Among the oriental cults introduced into the Empire, the worship of Mithra at first was a strong competitor to Christianity, and altars and shrines to this eastern divinity were common in the military bases along the Danube.

## VISIT:



**Aquae Iasae, Varaždinske toplice**, (1st – 4th Century); Croatia's oldest healing spa, named after the Illyrian tribe of the Iasi.



**Narona, Vid**, (200 BC – 620 AD / Augusteum: 10 BC – 400 AD); Croatia's first "in-situ" archaeological museum in the remains of a shrine of the Imperial Cult.



**Colonia Iulia Iader and Aenona, Zadar and Nin**, (250 BC – 400 AD); The Roman grid plan survives throughout Zadar's old town and Nin housed a temple of the Imperial Cult.



**Roman Tomb Painting, Silistra**, (29 – 600 AD); A late Roman tomb with well-preserved frescoes was found in the necropolis of Durostorum.

## DON'T MISS:

## While in Varaždin:

**Andautonia Archaeological Park**, Parish courtyard, Šćitarjevo, 10410 Velika Gorica, [www.andautonia.com/english.html](http://www.andautonia.com/english.html)

## Opening hours:

1st of May – 1st of Nov Sat, Sun 12.00 – 18.00, Mon – Fri by appointment.

## Muzej Turopolja Trg kralja

**Tomislava 1**, Šćitarjevo, 10410 Velika Gorica, ☎ +385 16221325,

[www.muzej-turopolja.hr](http://www.muzej-turopolja.hr)

## Archeological Museum in

**Zagreb**, 19 Nikola Subic Zrinski Square, 1000 Zagreb, ☎ +385 1 4873101,

[www.amz.hr](http://www.amz.hr)

**Opening hours:** Tue, Wed, Fri, Sat 10.00 – 18.00, Thu 10.00 – 20.00, Sun 10.00 – 13.00, Mon closed; complimentary museum tour: Sat 15.00

## While in Vid:

**Archeological Museum of Narona**, 20352 Vid,

## Did you know

That Pope John IV (640–642), probably born in Salona, in honor of the Christians from Dalmatia and Istria who were martyred in the Great Persecution of 304 AD, built the chapel of St. Venantius in the Lateran Basilica in Rome. The apse and the walls of the chapel are decorated with mosaics showing the nine martyrs from Salona.

☎ +385 20 687149,

[www.a-m-narona.hr/en/](http://www.a-m-narona.hr/en/)

## Opening hours:

15th of June – 15th of Sep Tue – Sun 9.00 – 19.00, Mon closed; 1st of Oct – 31st of May – Tue – Fri 9.00 – 16.00, Sat 9.00 – 17.00, Sun 9.00 – 13.00, Mon closed

## While in Zadar:

## Archeological Museum,

Trg opatice Čike 1, 23000 Zadar, ☎ +385 23 250516, <http://www.zadar.travel>

## Opening hours:

July – Aug daily 9.00 – 22.00, June, Sep daily 9.00 – 21.00, May Mon – Sat 9.00 – 19.00, Apr Mon – Sat 9.00 – 17.00, Oct Mon – Sat 9.00 – 15.00, Nov – Mar Mon – Fri 9.00 – 14.00, Sat 9.00 – 13.00, Sun closed

## Museum of ancient glass,

Poljana Zemaljskog odbora 1, 23000 Zadar, ☎ +385 23 363833, [www.mas-zadar.hr](http://www.mas-zadar.hr)

## Did you know

That the so-called "Edict of Milan" was issued jointly by the Illyrian emperor Constantine the Great and his co-ruler Licinius. At that time, in January of 313 AD, the emperor Licinius was resident with his family in the Imperial Palace in Sirmium and had to be summoned to Milan to meet with Constantine.

**Opening hours:** 16th of June – Sep daily 9.00 – 21.00,  
Oct – Apr Mon – Sat 9.00 – 16.00, Sun closed, May – 15th of June Mon – Sat 9.00 – 19.00, Sun closed

**Museum of Nin Antiquities,**  
Trg Kraljevac 8, 23232 Nin,  
☎ +385 23 264726,  
<http://amzd.hr>

**Opening hours:**  
July – Aug daily 9.00 – 22.00,  
June, Sep daily 9.00 – 21.00,  
May Mon – Sat 9.00 – 19.00,  
Apr Mon – Sat 9.00 – 17.00,  
Oct Mon – Sat 9.00 – 15.00,  
Nov – Mar Mon – Fri 9.00 – 14.00, Sat 9.00 – 13.00, Sun closed

### While in Silistra:

**Regional Historical Museum,**  
ul. G. S. Rakovski 24, 7500  
Silistra, ☎ +359 86 820386,  
✉ museumsilistra@abv.bg,  
[http://bulgariatravel.org/en/object/195/Arheologicheski\\_muzej\\_Silistra](http://bulgariatravel.org/en/object/195/Arheologicheski_muzej_Silistra)

**Opening hours:** May – Sep  
Tue – Sat 9.30 – 17.00, Sun, Mon  
closed; Oct – Apr Mon – Fri 9.30  
– 17.00, Sat, Sun closed

## INFORMATION:

**Aquae lasae Tourist office,**  
Trg slobode 16, Stari grad,  
42223 Varaždinske Toplice,  
☎ +385 42 633133,  
<http://toplice-vz.hr>,  
[www.varazdinske-toplice.hr/](http://www.varazdinske-toplice.hr/)

**Dubrovnik and Neretva County  
Tourist Board,** c/o Dubrovnik  
Tourist Board,  
☎ + 385 20 324999,  
<http://visitdubrovnik.hr/en-GB/Attractions>

**Dubrovnik Tourist Board,**  
Brsalje 5, 20000 Dubrovnik,  
☎ +385 20 323887,  
[www.tzdubrovnik.hr/eng/](http://www.tzdubrovnik.hr/eng/)

**Tourist Information Centre,**  
Mihovila Klaića 1, 23000 Zadar,  
☎ +385 23 316166,  
[www.tzzadar.hr](http://www.tzzadar.hr)

**Tourist office,** Trg braće Radić 3,  
23232 Nin,  
☎ +385 23 265247,  
[www.nin.hr/en/](http://www.nin.hr/en/)

**Tourist Information Center,** ul.  
N. Y. Vaptsarov 55, 7500 Silistra,  
☎ / 📠 +359 86 820487,  
✉ wfo@abv.bg,  
[www.silistra.bg/news.php](http://www.silistra.bg/news.php),  
[www.ss.government.bg/](http://www.ss.government.bg/)

# Discover the Danube



danube.travel



A stylized orange sun with vertical rays is positioned on the left side of the page, partially overlapping a dark blue background. Below the sun, there are decorative orange and pink swirls and lines that extend across the page.

## Introduction

# 5. MILITARY ACHIEVEMENTS

## SITES ASSOCIATED WITH THE ROMAN MILITARY “PRESENCE-DEFENSE OF THE FRONTIER ON THE DANUBE” OR SIGNIFICANT EVENTS IN ROMAN MILITARY HISTORY

Because the strategic importance of the Danube Corridor in connecting the western and eastern parts of the Roman Empire coupled with the added need to protect the territorial integrity of the Empire in the corridor against destructive invasions required the construction of facilities to house the soldiers and the emperors who commanded them, a network of roads, and forts. The culmination of the first and defining phase of Roman occupation of the Sava-Danube corridor took place under the generalship of Tiberius (who would eventually be the second emperor) during the reign of Augustus. Later when Tiberius was emperor the first military bases like Diana near Kladovo were established along the Danube and also segments of the Danube military road in the Iron Gate were constructed. In the second half of the first century AD the emperor Domitian campaigned along the Danube and probably made his base at Sirmium. This is when the great legionary bases on the river probably were started, like at Novae and Viminacium. The Danube fleet was also strengthened un Domitian, which probably can be connected with Sexaginta Prisca as a naval base. Final consolidation of the northern frontier of the Empire along the Danube was directed by the first non-Italian emperor Traian in the early second century. Traian himself was on the Danube on several occasions, including the management of campaigns in two successful Dacian wars against Decebalus. His base was probably at the legionary base at Viminacium, but he certainly was responsible for road construction and repair (commemorated on the Tabula Traiana) in the Iron Gate gorge and the construction of both a ship canal and the great bridge across the Danube near Kladovo in 105. The final result of Traian's aggressive military policy was the annexation of Decebalus' kingdom as the new Dacian provinces north of the Danube.

## VISIT:



**Viminacium, Kostolac and Požarevac, (20 – 400 AD);** One of the earliest legionary camps on the Danube – military base and civilian settlement, amphitheater and city baths (thermae).



**Diana, Iron Gate – Kladovo, (100 – 600 AD);** Military fortress to guard the Limes and the entrance to first Danube canal.



**Twin Cities of Apulum, Alba Iulia, (106 – 275 AD);** The largest urban center in Roman Dacia, with two cities and a legionary base.



**Sexaginta Prista, Ruse, (70 – 600 AD);** A Danube fleet base of "60 ships" and major Roman army base controlling traffic between the Black Sea and the Iron Gate.



**Roman Legion Camp Novae, Svishtov, (45 – 613 AD);** A legionary base, one of the cornerstones of the Danube frontier defenses, spreading over almost 30 hectares.



**Kaleto Fortress, Belogradchik, (1st – 19th Century);** The Roman and medieval fortress built in the imposing Belogradchik Cliffs is a candidate for UNESCO World Heritage status.

## DON'T MISS:

## While in Požarevac:

**National Museum Požarevac,** Dr. Voje Dulića 10-12, 12000 Požarevac, ☎ +381 12 223597, [www.pozarevac.rs/narodni-muzej-pozarevac](http://www.pozarevac.rs/narodni-muzej-pozarevac)  
**Opening hours:** Mon – Sat 8.00 – 17.00, Sun 8.00 – 14.00

**Archeological Park Viminacium,** 12208 Stari Kostolac BB, ☎ +381 62 669013 (tourist service), [www.viminacium.org.rs](http://www.viminacium.org.rs)  
**Opening hours:** daily May – Sep 9.00 – 19.00, Oct – Apr 9.00 – 17.00

## Did you know?

That the Danube at times froze over in antiquity and allowed invading barbarian tribes to cross with ease into Roman territory.

## While in Kladovo:

**National Archeological Museum Derdap,** Trg Kralja Petra bb, 19320 Kladovo, ☎ +381 19 803900, [www.narodnimuzej.rs](http://www.narodnimuzej.rs)

**Opening hours:** Tue – Sun 10.00 – 17.00, Mon closed

**Derdap National Park,** Visitor Center, Kralja Petra I 14a, 19220 Donji Milanovac, ☎ +381 30 590788, [www.npdjerdap.org/en/](http://www.npdjerdap.org/en/)  
**Opening hours:** Mon – Sat 7.00 – 15.00, Sun closed

## While in Alba Iulia:

**National Museum of Unification,** Strada Mihai Viteazul 12 – 14, 510010 Alba Iulia, ☎ +40 258 813300, <http://mnvai.ro/muzeul>, <https://apulumarchaeology.wordpress.com/>  
**Opening hours:** Tue – Sun Jun – Sep 10.00 – 19.00, Oct – May 10.00 – 17.00, Mon closed

## While in Ruse:

**Roman Fortress Sexaginta Prista,** ul. Tsár Kalolan 2, 7000 Ruse, ☎ +359 82 825004, [www.museumruse.com](http://www.museumruse.com)  
**Opening hours:** Tue – Sat 9.00 – 12.00, 12.30 – 17.30; Sun, Mon closed

## Did you know?

That the soldiers in the Roman army were paid with silver denarii, the silver for much of which was mined in the Danube provinces.

### Regional Museum of History,

Ul. Alexander Battenberg 3,  
7000 Ruse,

☎ +359 82 825006,

[www.museumruse.com](http://www.museumruse.com)

#### Opening hours:

daily 9.00 – 18.00

### While in Svishtov:

#### Archeological exposition Novae,

ul. Dimitar Shishmanov,  
5250 Svishtov,

☎ +359 631 60467,

✉ [novae@abv.bg](mailto:novae@abv.bg),

[www.visitsvishtov.com/new/landmarks.php?id=3&info=28](http://www.visitsvishtov.com/new/landmarks.php?id=3&info=28)

#### Opening hours:

Apr – Oct daily 11.00 – 21.00,

Nov – Mar closed; guided tours  
(Bulgarian, English, German)

### While in Belogradchik:

#### Opening hours fortress/

#### visitor center:

daily Jun – Sep 8.00 – 21.00,

Oct – May 9.00 – 17.00

## INFORMATION:

### Tourism organization of

### Požarevac (Viminacium):

Veljka Dugoševića 25,  
12000 Požarevac,

☎ +381 12 542277,

[www.topozarevac.rs](http://www.topozarevac.rs)

### Tourist Information Center

(Turistički informativni centar)

in Moše Pijade Str.

### Tourist Organization of

### Kladovo,

Dunavska 16a, 19320 Kladovo,

☎ +381 19 801690,

<http://tookladovo.rs>,

[www.kladovo.rs](http://www.kladovo.rs)

### Branch: Tourist Info Centre,

Kralja Aleksandra 15,

19320 Kladovo,

☎ +381 19 801773

### Tourism Center, Strada Mihal

Viteazul 15, Poarta IV a,

510018 Alba Iulia,

☎ +40 745 081021,

[www.stiri.turismalba.ro](http://www.stiri.turismalba.ro),

[www.apulum.ro/en/prezentare.html](http://www.apulum.ro/en/prezentare.html),

[www.romaniatourism.com/alba-iulia.html](http://www.romaniatourism.com/alba-iulia.html)

### Tourist information center, ul.

Aleksandrovska 61, 7000 Ruse,

☎ / 📠 +359 82 824704,

<http://tic.rousse.bg>, [www.ruse-bg.eu/en/](http://www.ruse-bg.eu/en/)

### Council of Tourism, ul. Dimitar

Hadjivasilev 2, 5250 Svishtov,

☎ +359 631 60371,

☎ / 📠 +359 631 60768,

[www.visitsvishtov.com](http://www.visitsvishtov.com),

[www.svishtov.bg](http://www.svishtov.bg)

### Tourist Information Center,

1a Poruchik Dvorianov str.,

3900 Belogradchik,

☎ +359 877 881283,

☎ +359 936 3291,

[www.belogradchik.biz/](http://www.belogradchik.biz)

[belogradchik.en.html](http://belogradchik.en.html),

[www.belogradchik-eu.net](http://www.belogradchik-eu.net)





# Danubius Travel

R O M A N I A

member of **eurolines group**®



Excursions ◦ Accommodation ◦ Transfers

Phone: (+40) 241 480363 | Fax: (+40) 241 480360 | Mobile: (+40) 721 471054  
incoming@danubius.ro | www.danubius.ro



**BEST INCOMING AGENCY IN ROMANIA 2013 & 2014**



**EXCELLENCE AWARDS CEREMONY**

HTL INVESTMENT CONFERENCE · JW Marriott - Bucharest, ROMANIA



## *Introduction*

# WINES FROM THE DANUBE REGION

Even though the viniculture in some parts of the region dates back to the 4th century BC, as artefacts in the Thracian and Dacian graves prove, the wine element of the Route blends in conceptually with the introduction of Roman culture and social mores into the Danube region. For the indigenous people, who lived and worked alongside of the Roman soldiers, one can infer that a way “to act Roman” and in a certain sense “to be Roman” was to acquire a taste for this new beverage from the Mediterranean world.

Specifically relevant is the documented presence of Roman transport amphora on virtually every site on the Route. These ceramic containers for liquids were designed to be stacked in the holds of sea-going vessels and river transports. Three commodities typical of Roman taste were carried in the amphoras: wine, olive oil and the ubiquitous fish sauce called garum. The amphoras were often labeled as to their contents and point of origin, and extensive archaeological research in recent years have allowed the identification of trade patterns which reached into the Danube corridor from both the west and east. For the soldiers in the forts, also for Romans in civilian settlements and later Romanized natives in the Danube region these items, especially the wine, were daily necessities and also highly prized status commodities

Similar climatic and other environmental conditions which encouraged the ancient Greek and Romans to extend viticulture to the Danube region have resulted in a renaissance of wine production in modern times.

# CROATIA



## BARANJA WINE REGION ②



Situated between the Danube and the Sava, with numerous channels and lazy waterways cutting across it, the Baranja lowland enjoys a moderate continental climate and boasts ideal vine growing terrains. Fields of wheat and rolling hills covered in vineyards, with charming cottages in between – that's Baranja. Many of these cottages have wine cellars, some with 200-year-old barrels.

### Location:

Northern Croatia, near Osijek;  
GPS N 45°33'35" E 18°1'13.46"

### Information:

#### Tourism Organisation of Osijek

Županijska 2, 31000 Osijek

[www.tzosijek.hr](http://www.tzosijek.hr)

### Wine cellars/vineyards:

#### Wine cellar (Podrum) Mihalj Gerštmajer,

31 Petöfi Sandora, 31307 Zmajevac, Baranja,

☎ +385 31725376,

<http://knezevi-vinogradi.hr/uk/vinske-ces-te-podrumi/wine-cellar-gerstmajer.html>

#### Wine cellar/restaurant Josić, 194 Planina,

31307 Zmajevac, Baranja,

☎ +385 31 734410, [www.josic.hr](http://www.josic.hr)

#### Čokot-čarda Winery, VI. Vinko Medić,

Planine 168, 31307 Zmajevac, Baranja,

☎ +385 31 570215, [www.cokot-carda.hr](http://www.cokot-carda.hr)

## ILOK WINE REGION ①



Ilok's Srijem vineyards are traditionally linked with the Serbian Fruška Gora and are a paradise for white wine aficionados. Wine growing in Ilok dates back to Roman Emperor Probus (3rd century AD). In 1699, Emperor Leopold I gave Ilok and the lands in Srijem to Livio Odescalchi, an Italian nobleman. His family lived here until 1945, inventing new wine-making technologies through the decades.

### Location:

Easternmost Croatian town bordering Serbia;  
GPS N 45°13'19.5924", E 19°22'44.796"

### Information/Wine history:

#### Wine & Tourist Center Ilok-Sirmium,

Trg Nikole Iločkog 2, 32236 Ilok,

☎ +385 32 590020, [www.turizamilok.hr](http://www.turizamilok.hr)

#### Town Museum, Šetalište oca Mladena

Barbarića 5, 32236 Ilok,

☎ +385 32 827410, [www.mgi.hr](http://www.mgi.hr)

#### Opening hours: Tue – Thu 9.00 – 15.00, Fri 9.00

– 18.00, Sat 11.00 – 18.00,

Sun group visits, only; Mo closed

### Wine cellars/vineyards/wine tasting:

#### Stari podrum (Old Cellar),

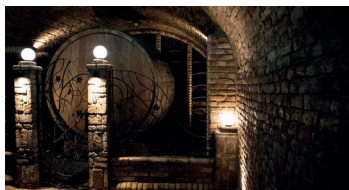
Šetalište o. M. Barbarića 4, 32236 Ilok,

☎ +385 32 590 088, [www.ilocki-podrum.hr](http://www.ilocki-podrum.hr)

# SERBIA



## FRUŠKA GORA REGION ③



The Fruška Gora region is most famous for its National Park, 16 Serbian Orthodox monasteries and, of course, a very old winemaking tradition. Roman Emperor Probus was responsible for the start of viniculture in this area in the 3rd century AD. The Fruška Gora vineyards decorate the lower slopes of the mountain and are blessed with a good microclimate. Sixty privately owned wine cellars offer samples for tasting.

### Location:

**Northwest of Belgrade**, between the Sava and the Danube; GPS N 45°12' 9" E 19°56' 4"

### Information:

**Fruška Gora National Park**, Zmajev trg 1, 21208 Sremska Kamenica, ☎ +381 21 463666, [www.npfruskagora.co.rs](http://www.npfruskagora.co.rs)

### Wine cellars/vineyards/wine tastings:

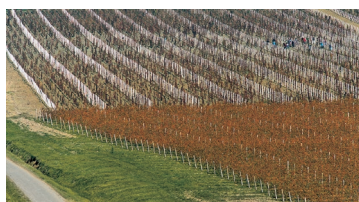
**Kiš wine cellar**, Karlovačkog mira 46, 21205 Sremski Karlovci, ☎ +381 21 882880, [www.vinarijkis.com](http://www.vinarijkis.com)

**Kovačević Winery**, Doke Sundukovica 85, 22406 Irig, ☎ +381 22 461192

**Tomcat's Wine Cellar**, Zanatski centar bb, 22406 Irig, ☎ +381 22 462492, [www.mackovpodrum.co.rs](http://www.mackovpodrum.co.rs)

**Živanović wine cellar/Museum of Beekeeping**, ul. Mitropolita Stratimirovica 86 b, 21205 Sremski Karlovci, ☎ +381 21 881071, [www.muzejzivanovic.com/en/](http://www.muzejzivanovic.com/en/)

## SOUTH BANAT REGION ④



The Vršac vineyards are on the slopes and at the foot of the Vršac Mountains. The soil structure – clay, sandy soil and quartz – is perfect for grape ripening. The grapes that are harvested late often come with 35 % sugar content. The moderate continental climate is another positive factor. The Vršac vineyards were first mentioned in 1494, when a barrel of Vršac wine was bought for 10.5 golden forints by order of the Hungarian King Ladislaus.

### Location:

**Vršac**: 80 km northeast of Belgrade; 14 km from Romanian border; GPS N 45°6' 12" E 21°16' 28"

### Information:

Municipality of Vršac, Trg pobede 1, 26300 Vršac, ☎ +381 13 800501, [www.vrsac.com/active/en/home.html](http://www.vrsac.com/active/en/home.html)

### Wine cellars/vineyards:

**Kristov Wine Cellar**, Veliko Središte, 26300 Vršac, ☎ +381 64 0889655

**Nedin Wine Cellar**, Gortanova 22, village of Gudurica, 26300 Vršac, ☎ +381 13 881118

**Selecta Wine Cellar Stojšić**, Otona Župančiča  
26, village of Gudurica, 26300 Vršac,  
☎ +381 13 881067

**Vinik Winery**, Novosadska 1, 26300 Vršac,  
☎ +381 13 836721, [www.dobrovino.com](http://www.dobrovino.com)

**Vršacki Vinogradi**, Svetosavski trg 1, 26300 Vršac,  
☎ +381 13 838025, [www.vvinogradi.co.rs](http://www.vvinogradi.co.rs)

## THE MORAVA REGION 6



Smederevo is in the heart of the Morava wine region. Blessed with the good soil and microclimate, the area has got all the ingredients for good winemaking – the level of sugar in wine reaches 26 %. Viniculture was introduced by Emperor Probus in the 3rd century AD, and the tradition is celebrated during the annual wine festival Smederevska jesen (Smederevo Autumn). Serbian medieval rulers also grew grapes here.

### Location:

**Smederevo:** 46 km southeast of Belgrade;  
GPS N 44°40'11" E 20°55'42"

### Wine cellars/vineyards/Wine tastings:

**Janko Wine Cellar (Podrum)**, ul. Šalinačka bb,  
11300 Smederevo, ☎ +381 26 613340,  
[www.vinopedia.rs/?p=925&lang=en](http://www.vinopedia.rs/?p=925&lang=en),  
[www.vinjanko.com](http://www.vinjanko.com)

**Radovanović Small Wine Cellar (Mali Podrum)**,  
ul. Dositeja Obradovića 10, 11319 Krnjevo,  
☎ +381 26 821085, [www.podrumradovanovic.rs](http://www.podrumradovanovic.rs)

**Živković Winery (Podrum)**, village of Kličevac,  
12000 Požarevac, ☎ +381 12 226426

## NEGOTIN WINE REGION 5



Negotinska Krajina, a valley surrounded with two mountains and two rivers, enjoys a specific microclimate with hot, sunny summers and cold. Pimnice, a conglomerate of 150 wine cellars (15 still in use), and candidate for the UNESCO World Heritage List, built around 1861, stores the grapes harvested in the nearby vineyards. Discover this unique time capsule, which once sold the best wines to France for gold coins.

### Location:

**290 km from Belgrade;** 150 km from Niš,  
13 km from Bulgarian border, 9 km from  
Romanian border;  
GPS N 44°4'16" E 22°30'5"

### Information/Wine tasting:

**Tourist Organization of Negotin**,  
Vojvode Mišića 25, 19300 Negotin,  
☎ +381 19 547555,  
[www.toon.org.rs](http://www.toon.org.rs),  
[www.wineserbia.rs/eng/winery/negotinski](http://www.wineserbia.rs/eng/winery/negotinski)

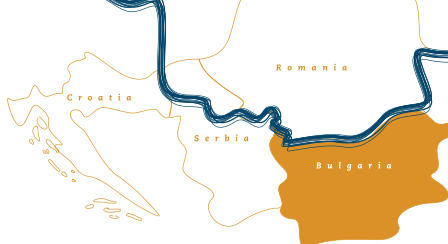
### Wine cellars/vineyards:

**Matalj Vinarija**, 19300 Negotin,  
☎ +381 63 522828,  
[www.mataljvinarija.rs](http://www.mataljvinarija.rs)

**Podrum Dajic**, Mihailovac,  
☎ +381 19 599163,  
[www.podrumdajic.rs](http://www.podrumdajic.rs)

**Vinarija Vino-Grade**,  
Vinarska str., Rogljevo, 19310 Negotin,  
☎ +381 19 541120,  
✉ [vinogradderogljevo@gmail.com](mailto:vinogradderogljevo@gmail.com)

# BULGARIA



## NORTHWEST REGION (VIDIN AREA) 10



As part of the Danubian Plain wine region (also known as the Danube River Plains), Vidin area enjoys hot summers with extensive sunny days, excellent microclimate and specific soil (red, sandy limestone). This is where the first wine school opened in 1887. Today, seven winemakers in Vidin area continue the long winemaking tradition. Also visit Vragansky Balkan Nature Park for a hike or biking trip.

### Location:

GPS N 32°59' 37.3158 E 22°52' 35.0148"

### Information:

**Vragansky Balkan Nature Park Visitor Center "Natura" (in Old Mosque)**, ul. Pop Sava Katrafikov 17 – 19, 3000 Vratska,

☎ +359 926 60318,

[www.vr-balkan.net/en](http://www.vr-balkan.net/en)[www.vr-balkan.net/en](http://www.vr-balkan.net/en)

**Opening hours:** Apr – 31Sep daily 9.00 – 17.00, 1 Oct – 31 Mar Mon – Fri 9.00 17.00, Sat/Sun closed

**Belogradchik Tourist Information Centre**, ul. Poruchik Dvoryanov 1a, 3900 Belogradchik, ☎ +359 877 881283

### Wine cellars/vineyards, wine tasting:

**Magura Cave Bat Gallery, c/o Magura Winery & Cave**, 5 Alexandar Pushkin Blvd. (office), 1618 Sofia, ☎ +359 2 8570015, [www.magurawinery.bg](http://www.magurawinery.bg)[www.magurawinery.bg](http://www.magurawinery.bg)

**Borovitza Winery**, 3955 Borovitza, ☎ +359 878 510619, [www.winwines.net](http://www.winwines.net)[www.winwines.net](http://www.winwines.net)

**Chateau de Val Winery**, ul. Parva 201, Gradetz, ☎ +359 88 8001752, [www.chateaudeval.com/en](http://www.chateaudeval.com/en)

## NORTH-CENTRAL REGION (PLEVEN, VELIKO TARNOVO) 12



The North-Central region of Bulgaria, part of the Danubian Plain wine region, stretches from Pleven and Veliko Tarnovo, the "City of the Tsars" to Ruse. Many mineral springs add to the authenticity of the local terroir. The city of Pleven is the heart and soul of Bulgarian wine makers. In 1902, the National Institute of Viticulture and Oenology, the fifth of that kind in the world, was established here.

### Location:

**5 km from Pleven;**  
GPS N 43°24' 29.61" E 24°37' 13.0224"



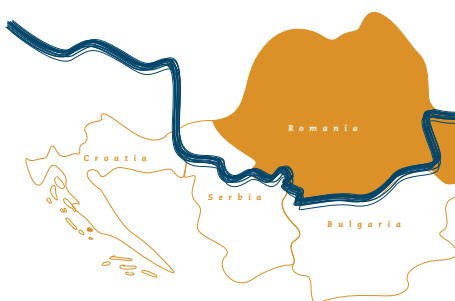
**Information:****Wine Museum, Kailaka National Park,**

ul. Totlebenov Val 1, 5800 Pleven,

☎ +359 887 731537,

[www.winemuseum-bg.com](http://www.winemuseum-bg.com)**Opening hours:**

Wed – Sun 11.00 – 18.00, Mon, Tue closed

**THE NORTHEAST/BLACK SEA** 11

This region, also known as the Black Sea Coastal, produces nearly one third of all Bulgarian wines. There are three sub-regions: the Black Sea Coastal region, Drobuja, and Ludogorie (known for its wild forests) in the northeast. A mild climate and long, warm autumns favour the cultivation of a great variety of (mainly) white grapes, as they accumulate the perfect amount of sugar.

**Location:**

GPS N 43°50'58.4304" E 25°57'18.7482"

**Wine cellars, vineyards, wine tasting:****Khan Krum Wine Cellar**, Khan Krum village,

9863 Shumen, ☎ +359 53 33374,

[www.khankrum.bg/wines.php](http://www.khankrum.bg/wines.php)**LVK-Vinprom AD**, 8, 29 January Str.,

7700 Targovishte, ☎ +359 601 69602,

[www.lvk-vinprom.com](http://www.lvk-vinprom.com)**Rousse Wine House**, Leventa Complex,

ul. General Kutuzov, 7000 Ruse,

☎ +359 82 862880, [www.leventa-bg.net](http://www.leventa-bg.net)**ROMANIA****MUNTENIA AND OLTEANIA HILLS** 8

Located south of the central Carpathians, vineyards cover approximately 104,000 hectares. The vineyards are in the famous sunny wine belt (44°–45°N), on the final slopes of the mountain towards the plains. An ideal mix of Continental and Mediterranean climates, the local micro-climate and soil create perfect environment for excellent, full-bodied red wines.

**Location:****Mehedinti County**; Vinju Mare: 25 km northwest of Drobeta; GPS N 44°21'0" E 27°4'59.998"**Wine cellars/vineyards/wine tasting:****Domenille/Crama Vinju Mare**, Strada Unirii 2,Vinju Mare, ☎ + 40 252 350547, [www.vvm.ro](http://www.vvm.ro)**Crama Oprisor**, 227335 Oprisor municipality,☎ +40 252 390907, [www.crama-oprisor.ro](http://www.crama-oprisor.ro)**Vinarte Crama Starmina**, Rogova;

contact: Str. Nicolae Filipescu 43, sector 2, Bucharest,

☎ +40 21 3233803, [www.vinarte.ro](http://www.vinarte.ro)

## THE DANUBE TERRACES 9



Some areas really benefit from the perfect microclimate. Viniculture dates back to the 4th century BC, as artefacts in the Thracian and Dacian graves prove. Wine trading on and along the Danube started with the first Greek settlements circa 630 BC. While Dacian King Burebista (1st century BC) destroyed all vineyards to protect his people from constant invasions by the migrating peoples, Romans were committed to the cultivation of vineyards.

### Location:

**Central Southern Romania;**

GPS N 44°6'20.49" E 27°22'40.09"

### Wine cellars/vineyards/wine tasting:

**Ostrovit/Domenille Ostrov**, Regiei Str. 1, 8674 Ostrov, Constanta County, ☎ +40 21 3110100, [www.vinpentrutine.ro/ro](http://www.vinpentrutine.ro/ro)

**Intervitt Crama Voievodului**, Sos. Alexandriei km 34.200, 145400 Zimnicea, Teleorman county, ☎ +40 732 127648, [www.intervitt.com](http://www.intervitt.com); contact

**Interagro: Str. Verii 1 – 3**, Bucharest, ☎ +40 21 2103700, [www.interagro.ro](http://www.interagro.ro), [www.interagro.ro/pages/en/agriculture\\_intervitt\\_multifruit.php?lang=en](http://www.interagro.ro/pages/en/agriculture_intervitt_multifruit.php?lang=en)



## DOBRUGEA/DOBRUDJA/ DOBRUJA HILLS 7



According to wine experts, Dobrugea has the best conditions for wine growing in Romania. Its continental climate with warm, droughty summers, moderate winters, early springs and late autumns allow for long vegetation periods. Good soil structure and fertility, plenty of sun and low precipitation do make a difference. Outstanding rich-flavoured noble red and excellent white wines with natural sweetness are typical of this region.

### Location:

**West and South of the Danube Delta**, around Constanta; Murfatlar/Basarabi: 19 km west of Constanta; GPS N44°11'00" E 28°25'00"

### Information, day trip bookings:

**Travel in Constanta**, B-dul Tomis 124, 12388 Constanta, ☎ +40 244 944194, [www.travelinconstantia.com/en/](http://www.travelinconstantia.com/en/)

### Wine cellars/vineyards/wine tasting:

**Podgoria/Crama Murfatlar**, Strada Murfatlar 1, 905100 Murfatlar/Basarabi, Constanta county, ☎ +40 241 706850, [www.murfatlar.com](http://www.murfatlar.com)

**Domenille Clos de Colombes**, Strada Olimp, Comuna 23 August, 905550 Neptun, Constanta county, ☎ +40 374 033033, [www.closdescolombes.eu](http://www.closdescolombes.eu)

**Alcavin Curtea Regala Winery**, Str. Viticultori 2, 825300 Măcin, Tulcea county, ☎ +40 240 573368, [www.curtearegala.ro](http://www.curtearegala.ro)



# Macin Wines

## Garica Niculitel Vineyard



S.C. ALCOVIN S.R.L.  
Măcin - Romania, Viticultori Street no.2  
Phone: +(4) 0240 57 33 68 +(4) 0743147236  
email: [office@vinuridemacin.ro](mailto:office@vinuridemacin.ro)  
[www.vinuridemacin.ro](http://www.vinuridemacin.ro)  
[www.facebook.com/VinuriDeMacin](https://www.facebook.com/VinuriDeMacin)

*Professional wine tastings for tourists*



MACIN WINERY DCC MEMBER




danube  
competence  
center

[www.danubecc.org](http://www.danubecc.org)

## *Introduction*

# IMPRESSIVE NATURAL SETTINGS:



In the Fountain of the Four Rivers by Gian Lorenzo Bernini on the Piazza Navona in Rome, a bearded male figure symbolizes the Danube, itself the allegorical symbol for Europe – one of the four continents known to humanity at the time. At almost 2,890 km, the Danube is the second longest river and the longest waterway running East-West on our continent.

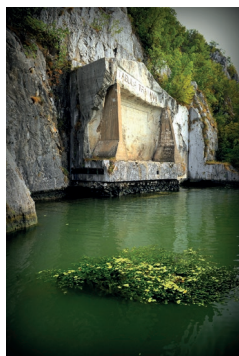
In contrast to the upper reaches, the Middle and Lower Danube are mostly unlevelled and unregulated. Thus, all along the river are wide reedbeds and meadows, lakes and marshes and innumerable small, branching tributaries – a refuge for many rare animal and plant species and a paradise for nature lovers.

## ILOK



**Ilok** (population: 6,800), once **Cuccium**, a Roman cavalry fort on the Danube, is connected with the Serbian town of **Bačka Palanka** via the 825-metre long bridge across the Danube. There you will find the legendary **Ladanjsko Imanje Principovac**, a countryside residence of the Italian family Odescalchi built in 1864. You will find a bar, a restaurant, a hotel, and even a golf school and practice course here and admire the unique panoramic view of Srijem.

## IRON GATE



Both the widest and the narrowest and also the deepest sections of the Danube lie in Serbia. At Golubac the river reaches its maximum, lake-like

width of around 7 km, while at the Iron Gate it is forcibly compressed, believe it or not, down to a mere 150 m with a depth of over 80 m. There you can see the tallest stone sculpture in Europe (40 m. high) of the Dacian King Decebalus (inscribed Decabalus Rex-King Decebalus) on the Romanian bank of the Danube.

## BELOGRADCHIK FORTRESS



The Belogradchik fortress is the main attraction of this little town (population: ca. 5,300), situated 545 metres above sea level and 50 km south of the Danube. When you get here, enjoy the panoramic views and the breathtaking Belogradchik Rocks, a candidate for the UNESCO World Heritage List.

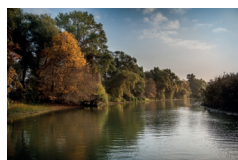
## RUSENSKI LOM NATURE PARK



Ruse (population: 150,000) is connected with Giurgiu (Romania) via a bridge over

the Danube, built in 1954. Rusenski Lom Nature Park is located 20 km south of Ruse and is named after Rusenski Lom River. There you will find beautiful river terraces and high vertical rocks, the caves and the great biological diversity. Worth seeing is the nearby rock churches of Ivanovo, a UNESCO World Heritage Site.

## DANUBE DELTA



In three main arms and countless tributaries the Danube creates a natural habitat unmatched anywhere else in Europe – back in 1991 UNESCO designated the Danube Delta Biosphere Reserve a World Natural Heritage Site. Over 4,000 species of animals and over 1,000 species of plants, many hard to find anywhere else in Europe, have made their home in this, the largest, continuous reedbed on Earth. Orchids, irises, water lilies and tamarisk growing on the water filtered through the hollow-stemmed reeds or on the labyrinthine banks present an endless range of subjects for photographers visiting the Danube delta.



Where to eat

# PAMPER YOUR BODY! PAMPER YOUR SOUL!

ENJOY THE DELICIOUS CUISINES ALONG THE ROUTE...

Thanks to its long lasting history, Balkan food offers an outstanding variety of culinary delights with different cultural backgrounds. From the Thracians to the Ottoman and Habsburg Empire, from the Greeks and Romans up to international and stylish 21st century cooking, all have influenced and enriched this treasure of sophisticated recipes and dishes. It is also good to know that Croatia, Serbia, Bulgaria and Romania have a common approach to gastronomy: It is a sign of excellent and perfect hospitality.

When in Croatia, never miss to taste the spicy fish soup, offered in Vukovar or Ilok and prepared in kettles – on open fire. The Croatian Danube cooking tradition relies on black pepper, paprika and garlic as well as lard, and has – aside its Slavic tradition – lots of Habsburg, Italian and French influences too. Discover white truffles, the commeal dish *Žganci* (Croatian polenta), wild duck, noble roasted pheasant, or wonderful sweet desserts like famous *Palačinke* (crepes). Influenced by Turkish, Greek and Austro-Hungarian styles, the Serbian cuisine offers much more to discover than just the national dishes and drinks like *Pljeskavica* (beef/pork patty), *Cevapčići* (grilled minced meat) or the plum brandy *Sljivovica*. And, if you are not into grilled meat, try smoked ham (*šunka*) or sausages and salami from *Srem*! There are also the famous creamy *Kajmak* cheese, berries, honey and fruit dishes, a wide range of wonderful fresh and boiled vegetables, soups and salads. Go for wonderful *Meze* appetizers, spicy potato soup (*Ljuta krompir čorba*), soda bread, pies and dumplings, *Musaka* or *ratatouille* style *Djuveč*.

Never miss to visit a 'kafana' (кафана) or 'kavana', respectively, here or in Croatia. This type of small bistro/restaurant derives

from the Turkish kahvehane and Persian qahveh-khaneh (both for 'coffeehouse') and offers much more than just coffee and small snacks. It's a real introduction to the Serbian/Croatian way of life.

Bulgarian cuisine (Balgarska kuhinja) is famous for its lamb dishes and stews, also offered vegetarian or with chicken or pork. But the most favored are Bulgarian sour milk and Bulgarian Yogurt. Ask for traditional cold Tarator soup (yogurt, water, minced cucumber, dill, garlic, sunflower oil and chips), Bulgarian Kebab, or the Christmas dish Sarmi. Enjoy Meze appetizers and wonderful Shopska salad. Order grill dishes (skara) like Shishcheta (chicken, pork, vegetables) or Tatarian meat balls, Fish Zelnik (with sauerkraut and rice) or even Stuffed Carp! And enjoy the sweets like Baklava, halva with pistachios or traditional Pogacha. While Rakia liquor helps you order more, Ayran and Matenitsa (butter milk and Pitie (herb and fruit drinks) are also quite popular.

If you have not tasted Mămăligă (Polenta), you have not visited Romania! Served as a side dish, baked, with sour cream, vegetables or pork, or cheese - it is a must!

Aside the Dacian (vegetables, wine and cheese - look for Brânză) and Roman background (pastries, porridges, polenta, pasta, cheese), there are also Ottoman, Hungarian, Bulgarian, Serbian and even German elements in this outstanding cuisine. The Greeks introduced Musaca, the Turks meatballs and Austrians the şniţel (Viennese Schnitzel). Romanian pancakes (clătite) can also be prepared in sweet versions. All dishes may be accompanied not only by wine, but also by the Romanian plum brandy (ţuică). But the most impressive are the rich fish dishes that the Danube and Danube Delta offer: Roe salad (Salata de icre), traditional Carp in brine (Saramură), or fish cakes (Chiftele de peşte) are mouthwatering!

## CROATIA

### RESTAURANTS IN ILOK 1

#### Iločki podrumi

📍 Dr. Franje Tuđmana 72  
32236 Ilok  
☎ +385 32 590 003  
☎ +385 32 590 054  
[www.ilocki-podrumi.hr](http://www.ilocki-podrumi.hr)

#### Hotel Dunav

📍 Julija Benešića 62, 32236 Ilok  
☎ +385 32 596 500  
✉ [hoteldunavilok@hotel-dunavilok.com](mailto:hoteldunavilok@hotel-dunavilok.com)  
[www.hoteldunavilok.com](http://www.hoteldunavilok.com)



#### Restaurant Principovac

📍 Viewpoint Principovac  
32236 Ilok  
☎ +385 32 593 114  
✉ [principovac@ilocki-podrumi.hr](mailto:principovac@ilocki-podrumi.hr)  
[www.ilocki-podrumi.hr](http://www.ilocki-podrumi.hr)

### RESTAURANTS IN OSIJEK 2

#### Kod ruže

📍 Kuhačeva 25a, 31000 Osijek  
☎ +385 31 206 066  
[www.omnia-osijek.hr/krcma-kod-ruze/](http://www.omnia-osijek.hr/krcma-kod-ruze/)

#### Rustika

📍 Ulica Pavla Pejačevića 32  
31000 Osijek  
☎ +385 31 369 400  
[www.rustika.hr](http://www.rustika.hr)  
✉ [rustika.osijek@gmail.com](mailto:rustika.osijek@gmail.com)

### RESTAURANTS IN SPLIT 3

#### Restaurant Apetit

📍 Ulica Pavla Šubića 5  
21000 Split  
☎ +385 21 332 549  
✉ [apetit.split@gmail.com](mailto:apetit.split@gmail.com)  
[www.apetit-split.hr](http://www.apetit-split.hr)

#### Restaurant Le Monde

📍 Plinarska ulica 6  
21000 Split  
☎ +385 99 853 333

### RESTAURANTS IN DUBROVNIK 4

#### Restoran Poklisar

📍 Ribarnica ulica 1  
20000 Dubrovnik  
☎ +385 20 322 176  
✉ [restaurantpoklisar@gmail.com](mailto:restaurantpoklisar@gmail.com)  
[www.poklisar.hr](http://www.poklisar.hr)

## SERBIA

### RESTAURANTS IN NOVI SAD 3

#### Restoran Carda Aqua Doria

📍 Kamenički put bb,  
Petrovaradin,  
21000 Novi Sad  
☎ +381 21 6430949  
☎ +381 63 688296  
[www.carda.rs](http://www.carda.rs)

### RESTAURANTS IN SREMSKI KARLOVCI 3



#### Restoran Bermet Villa

📍 Trg Branka Radičevića 5  
21205 Sremski Karlovci  
☎ +381 66 000 055  
✉ [Radovan.stankovic@bermetvilla.com](mailto:Radovan.stankovic@bermetvilla.com)  
[www.bermetvilla.com](http://www.bermetvilla.com)



### RESTAURANTS IN BELGRADE

#### Restaurant Vodenica

📍 Bulevar Vojvode Bojovića 5b  
(near Nebojša Tower)  
11000 Belgrade  
☎ +381 11 26 28 250  
☎ +381 63 208 244  
✉ [info@restoranvodenica.co.rs](mailto:info@restoranvodenica.co.rs)  
[www.restoranvodenica.com](http://www.restoranvodenica.com)

#### Restaurant Zlatni Bokal

📍 Skadarska 26  
11000 Belgrade  
☎ +381 11 323 48 34  
[www.zlatnibokal.com](http://www.zlatnibokal.com)  
✉ [office@zlatnibokal.com](mailto:office@zlatnibokal.com)

#### Restaurants Sunce, Znak? and Kolarac

📍 Kralja Petra 6  
11000 Belgrade  
☎ +381 11 2635 421  
✉ [gordana.gavrilovic@varoskopija.rs](mailto:gordana.gavrilovic@varoskopija.rs)  
[www.varoskopija.rs](http://www.varoskopija.rs)

#### Kalemegdanska terasa

📍 Mali Kalemegdan bb  
11000 Belgrade

✉ office@kalemegdanskaterasa.com  
www.kalemegdanskaterasa.com

### Restaurant Milošev konak

📍 Topčiderska 1, 11000 Belgrade  
☎ +381 11 2663 146  
✉ konak@knincommerce.co.rs  
www.knincommerce.co.rs/  
r\_milosev.html



### RESTAURANTS IN SMEDEREVO

6

### Restaurant Park

📍 Filipa Višnjića 2  
11300 Smederevo  
☎ +381 26 649 470  
✉ autospidsd@gmail.com  
www.toosd.com

### RESTAURANTS IN VELIKO GRADIŠTE

8

### Restaurant Kod Brke

📍 Srebrno Jezero  
12220 Veliko Gradište  
☎ +381 12 7661152  
✉ info@kodbrke.co.rs  
www.kodbrke.co.rs

### RESTAURANTS IN KLADOVO

7

### Restaurants Kafanica

📍 Nikole Jankovića 1  
19320 Kladovo  
☎ +381 19 800 900  
✉ kafanica@kladovonet.com  
www.elite.co.rs

### RESTAURANTS IN ZAJEČAR

6

### Kod Mede

📍 Svetozara Markovića 56  
19000 Zaječar  
☎ +381 19 425 311

### RESTAURANTS IN NIŠ

9

### Nišlijska mehana

Prvomajska br. 49  
18000 Niš  
☎ +381 18 511 111  
✉ info@mehananis.com  
www.mehananis.com

### Stara Srbija

📍 Trg Republike 12  
18000 Niš  
☎ +381 18 521 902  
✉ info@starasrbija.com  
www.starasrbija.com

## BULGARIA

### RESTAURANTS IN BELOGRADCHIK

19

### Madona Tavern Belogradchik

📍 26 Hristo Botev Str.  
Belogradchik 3900, Bulgaria  
☎ +359 93 655546  
☎ +359 89 8457198  
✉ madonainn@yahoo.com

### Markashnitsa Mehana

📍 Vasil Levski str.  
Belogradchik 3900, Bulgaria  
☎ +359 879 830 206



### RESTAURANTS IN VIDIN

10

### Restaurant Fish&Grill

“Дунавъ”, Vidin, Bulgaria  
📍 Kraibrezhna Aleja str,  
Pontoon 6  
☎ +359 889 088 673

### Classic Restaurant Vidin

Vidin, Bulgaria  
📍 25 Tzar Aleksander II Street  
☎ +359 878 656 402  
www.vidinrestaurants.com/  
restaurantclassic/



### Restaurant Bononia Vidin

📍 Bdin Steet 2, Vidin, Bulgaria  
☎ +359 94606032  
☎ +359 94606012  
www.hotelbononia.net

### Han Madona Inn Falkovets

📍 Yanyovets 3949  
Falkovets, Bulgaria  
☎ +359 894774746  
✉ info@hanmadona.com  
www.hanmadona.com

### RESTAURANTS IN SVISHTOV

18

### Restaurant “Svistov” Svishtov

📍 Dimitar Shishmanov str. 10  
5250 Svishtov, Bulgaria  
☎ +359 899 877 887

### Restaurant “Svoboda” Svishtov

📍 Tsar Osvoboditel St. 96  
5250 Svishtov, Bulgaria  
☎ +359 88 553 0235



## RESTAURANTS IN RUSE 17

### Panorama (in Riga Hotel)

◆ Pridunavski Blvd. 22  
☎ +359 82 82 20 42  
☎ +359 82 82 38 53  
[www.hotel-riga.com](http://www.hotel-riga.com)

### HAPPY Bar & Grill

◆ Svoboda Square 4  
☎ +359 82 82 14 35;  
☎ +359 888 154 222  
[www.happy.bg](http://www.happy.bg)

### Leventa Complex Russe

Russe, Bulgaria  
☎ +359 82 862 880  
☎ +359 82 862 881  
✉ [info@leventa-bg.net](mailto:info@leventa-bg.net)  
[www.leventa-bg.net](http://www.leventa-bg.net)

### Restaurant "Chiflika" Russe

◆ 2 Otets Paisiy Str.  
Russe 7000, Bulgaria  
✉ [chiflikaruse@gmail.com](mailto:chiflikaruse@gmail.com)



### Mehana Izvora, Russe

◆ Nikolaevska Str. 5  
7000 Russe  
☎ +359 82 59 19 19  
[www.izvora.eu/index.php/mehana](http://www.izvora.eu/index.php/mehana)

### Mehana Hushove

◆ Gen. Gurko 10 Str. 7000 Russe  
☎ +359 082 821391  
[www.hyshove.com/h/index.php](http://www.hyshove.com/h/index.php)

### Restaurant Krushata

◆ Han Krum 9 Str.

Russe 7000

☎ +359 082 873854  
[www.hyshove.com/k/index.php](http://www.hyshove.com/k/index.php)



## RESTAURANTS IN SILISTRA 16

### Restaurant Humbata Silistra

◆ Dobrudzha str. 41  
7500 Silistra  
☎ +359 84 /419 697  
[www.humbata.vibs.bg](http://www.humbata.vibs.bg)

### Restaurant "Danube pearl"

Bulgaria,  
◆ Popina 7500 Silistra  
☎ +359 894 504 505  
✉ [danube.pearl@abv.bg](mailto:danube.pearl@abv.bg)  
[www.danibe-pearl.com](http://www.danibe-pearl.com)

## RESTAURANTS IN PLEVEN 12

### Restaurant "Navesa" Pleven

◆ Tsanko Tserkovski str. 18  
5800 Pleven  
☎ +359 64 805 918

### Restaurant "Sezoni" Pleven

◆ Strogozia 115, 5800 Pleven  
☎ +359 64 68 58 68  
☎ +359 886 779 555  
✉ [info@sezony.bg](mailto:info@sezony.bg)

### Restaurant "Lovna Sresta" Pleven

◆ Park Kailuka  
Pleven 5800, Bulgaria  
☎ +359 886/ 007 059

### Restaurant "Kosharite" Pleven

◆ Park Kailuka  
Pleven 5800, Bulgaria  
☎ +359 64 807 045

## ROMANIA

## RESTAURANTS IN ALBA IULIA 14

### La Maison de Caroline

◆ Str. Primaverii nr. 11 (fosta Rubin Patita)  
501010 Alba Iulia  
☎ +40 358 101 227  
[www.lamaisondecaroline.ro](http://www.lamaisondecaroline.ro)  
✉ [contact@lmdc.ro](mailto:contact@lmdc.ro)

### Preciosa

◆ Str. Lucian Blaga, Nr. 10 (in spatele Raiffeisen Bank Centru)  
Loc Alba Iulia, Jud. Alba.  
☎ +40 25 8814033  
✉ [office@preciosa.ro](mailto:office@preciosa.ro)  
[www.preciosa.ro](http://www.preciosa.ro)

## RESTAURANTS IN BUCHUREST

### Hanul Manuc

◆ Str. Franceza nr. 62-64,  
Bucuresti, Sector 3  
Cod postal 030106  
☎ +40 21 313 14 11  
☎ +40 769 075 844  
[www.hanulluimanuc.ro](http://www.hanulluimanuc.ro)  
✉ [cafemanuc@hanulluimanuc.ro](mailto:cafemanuc@hanulluimanuc.ro)





**Caru cu Bere**

♦ Strada Stavropoleos 5,  
București  
☎ +40 21 313.75.60  
☎ +40 726.282.373  
✉ rezervari@carucubere.ro  
www.carucubere.ro

**Hanul Berarilor**

♦ Str. Poenaru Bordea, nr. 2  
☎ +40 21 336 80 09  
✉ Hanuberarilor.soare@citygrill.ro  
www.hanuberarilor.ro

**Beraria**

♦ 32 Kiseleff 32, Herastrau Park,  
011343 Bucharest  
www.berariah.ro

**Lacrimi si Sfinti**

♦ Sepcari 16, Centrul Vechi,  
Bucuresti  
☎ +40 725 558 286  
✉ contact@lacrimisifinti.com  
www.lacrimisifinti.com/

**RESTAURANTS IN  
ORSOVA AND DROBETA  
TURNU SEVERIN**

8

**Pensiunea Damiro**

♦ Bulevardul 1 Decembrie  
1918, Orsova, Mehedinti,  
☎ +40 25 23 61 361  
☎ +40 722-207-930;  
www.pensiuneadamiro.ro

**Restaurant Club G**

♦ 24 Dr. Gheorghe Saidac Street  
220125 Mehedinti

Drobeta Turnu Severin  
☎ +40 252 32 22 77  
www.clubg.ro

**Restaurant 16,50**

♦ Drobeta-Turnu Severin,  
str.Traian nr.50  
☎ +40 747 852 537  
✉ office@1650.ro  
www.1650.ro

**RESTAURANTS IN  
CONSTANTA**

9

**MARCO POLO Restaurant**

♦ Sarmizegetuza 2  
900176 Constanta  
☎ +40 241 617 357

**Cafe d'Art Restaurant**

♦ Mircea cel Batran 97  
900176 Constanza  
☎ +40 241 615 092  
✉ cafedart\_scena@yahoo.com

**PIZZICO Restaurant**

♦ Ovid Square 7,  
900176 Constanta.  
☎ +40 241 615 555  
✉ goodfood@pizzico.ro

**Ambros**

♦ str. Mircea cel Batran, nr. 121  
Constanta, Romania  
☎ +40 341 441 058  
✉ office@ambros.ro  
✉ rezervari@ambros.ro  
www.ambros.ro





*How to travel*

# DISCOVER THE ROUTE BY BIKE

There are many ways to discover the Roman Emperors and Danube Wine Route, but if you are looking for attractions off the beaten track, hidden secrets and hideaways, they can be best reached with a bicycle. Stop along the Route wherever and whenever you want, discover charming small getaways or introduce people and communicate with them even at the fences of their houses. Be open and learn more about the friendly people along the Danube, their behaviors and customs, and keep in mind more than the perfect panoramic views of the river!

There are bicycle tours perfectly designed for families with kids, as well as the opportunity to rent an e-bike — just park your car and decide for a bicycle ride, weather individually organized or on a guided tour!

In Croatia, Danube Bicycle Trail is sign-posted as Ruta Dunav. In Serbia the trail runs along left bank of Danube, until Ram at Serbian-Romanian border is reached. At Ram cross the Danube to its right bank (ferry boat). Follow the Danube, which is also Serbian-Romanian border here. At Iron Gates Power Station I (Serbian: Đerdap I), cross Danube on the dam to Romanian city of Drobeta Turnu Severin. The trail to Bulgaria continues to the city of Negotin. In Bulgaria and Romania, Danube Bicycle Trail runs along both banks of Danube. The Bulgarian part (Bulgarian: Дунавският веломаршрут) follows for almost 500 km the Danube river bed, which here is also border to Romania. Danube runs for almost 1,000 km through Romania.

## EUROVELO 6 ROUTE ALONG THE ROMAN EMPERORS AND DANUBE WINE ROUTE



### Route (Croatia):

Kopački rit Nature Park –  
Osijek – Vukovar – Ilok

### Route (Serbia):

**Ilok (Croatia)** – Bačka Palanka  
– Fruška Gora mountains – Novi  
Sad – Petrovaradin fortress –  
Batajnica – Belgrade-Zemun  
– Belgrade-Kalemegdan fortress  
– Belgrade-Old town Belgrade  
– Ram – Golubac fortress – Iron  
Gates of Danube (Decebalus  
monument, Tabula Traiana) –  
Lepenski Vir – border crossing  
via dam of **Iron Gates Power  
Station I (Đerdap I)** – **Drobeta  
Turnu Severin (Romania)** –  
alternative: continue to **Negotin**  
and Serbian-Bulgarian border

### Route (Bulgaria):

**Negotin (Serbia)** – Bregovo –  
Vidin (Danube Bridge 2) –

Rabisha (Magura Cave) – Belograd-  
chik – Lom – Oryahovo – Baikal  
– Gigen – Nikopol – Svishtov – Batin  
– village Exarch Joseph (Ivanovo rock  
churches) – Mechka – Ruse (Danube  
Bridge to Giurgiu) – Tutakran – Ko-  
larovo – Silistra – **Danube crossing  
to Romania**

### Route (Romania):

**Stara Palanka** – Dubova/Decebal  
monument) – Orșova – **dam of Đerdap Power station (coming from Serbia)** – Drobeta Turnu Severin  
– Cetate – Calafat (Danube Bridge 2)  
– Zaval – Bechet – Corabia (Sucidava  
fortress) – Turnu Magurele – Zim-  
nicea – Giurgiu (**Danube Bridge to  
Ruse, Bulgaria**) – Oltenita – Calarasi  
– Cernavoda – (Constanta) – Tulcea –  
**Sulina** (kilometer “zero”)

## DON'T MISS:

**Blue Week Festival**  
([www.blueweek.org](http://www.blueweek.org))

**Blue Week Festival** tradition-  
ally celebrates the International  
Danube Day (29 June) covering  
themes of culture, nature and  
active tourism, and promoting  
cross-border cooperation and  
sustainable tourism.

During the Festival, in Drobeta  
Turnu Severin (Romania) and  
Kladovo (Serbia), international  
travelers and bikers along  
Danube Bike Path – interested



in knowing better the Iron gate  
region – can join domestic  
cyclists who ride their bikes  
for around twenty kilometers  
across the state border, along a

hilly terrain, or enjoy choreogra-  
phies performed by the young-  
est inhabitants of two towns,  
BMX cycling performances, or  
an attractive raffle.

*How to travel*

# MAIN AIRPORTS, BUS AND TRAIN STATIONS ALONG THE ROUTE



## CROATIA

### Roman Locations

#### Aquae Iasae

(Varaždinske Toplice)

GPS: GPS N 46°12'29" E

16°25'17" (Varaždinske  
toplice), N 45°46'18" E 16°7'5"  
(Šćitarjevo)

5

### How to get there:



#### Plane

Zagreb International Airport  
- Pleso



#### Bus

Zagreb – Varaždinske Toplice  
Varaždin – Varaždinske Toplice



#### Car

Highway A4 from Zagreb or  
Varaždin

#### Ancient city Salona and Roman roads

GPS N 43°30'24.912" E

16°26'32.82"

3

### How to get there:



#### Plane

Central Dalmatia is connected  
to European cities with regular  
and seasonal lines and low  
budget and charter flights.  
Passengers have two airports at  
their disposal.

### SPLIT AIRPORT

Address: Cesta dr. Franje  
Tuđmana 96  
21210 Kaštela

☎ +385 (0)21 203 506

✉ [informacije@split-airport.hr](mailto:informacije@split-airport.hr)

### BRAČ AIRPORT

Address: Terminal bb  
21 400 Supetar  
☎ +385(0)21 559 711  
✉ [info@airport-brac.hr](mailto:info@airport-brac.hr)



#### Bus

**SPLIT BUS STATION** is located  
in the centre of Split and near to  
the city port and railway station.  
This position offers quick and  
simple passenger transport.  
Obala kneza Domagoja 12  
☎ (central): +385 (0)21 329-180  
☎ (national traffic):  
(0)60 327-777  
(For Croatian networks only)  
☎ (international traffic):  
+385 (0)21 329-199



#### Car

By motorway A1 from Zagreb  
(411 km), Rijeka (366 km)  
and Dubrovnik (227 km, from  
Dubrovnik by national coastal  
road until Vrgorac, where is the  
entrance to A1 highway).  
Detailed information about roads  
and the situation on the roads can  
be found on the web sites  
[www.hak.hr](http://www.hak.hr) and [www.hac.hr](http://www.hac.hr)



#### Train

Croatia is directly connected  
to Slovenia, Bosnia and  
Herzegovina, Hungary, Italy,  
Austria, Switzerland, Germany,  
Serbia and Montenegro, and  
is indirectly connected with  
almost every other European  
country. Regular lines from  
numerous European cities lead  
to Split across Zagreb.

Detailed information about  
travel lines:

### CROATIAN RAILWAYS

Address: Domagojeva obala  
9 21000 Split  
☎ +385 (0)21 338 525



#### Boat

### JADROLINIJA

#### City of Pula (Brijuni Island)

1

Istria peninsula, Croatia;  
GPS N 44°52'26.81" E  
13°50'59.72" (Pula);  
(Brijuni Islands)  
N 44°54'35.15" E 13°46'27.46"

### How to get there:



#### Plane

Pula airport



#### Bus

Pula bus station



#### Car

Coming with car from  
Zagreb to Pula on highways A1  
(Zagreb-Split-Dubrovnik) - A6  
(Bosiljevo-Rijeka) - A8 (Matulji -  
Pazin - Kanfanar) - A9 (Kanfana-  
nar-Pula). Coming from Trieste  
(Italy) to Pula on highway A9  
(Umag-Kanfanar-Pula).



#### Train

Pula railway station



#### Boat

Pula port

## Vid

4

3 kilometres from Metković  
(near Dubrovnik), Croatia;  
GPS N 43°4' 52.24"  
E 17°37' 41.24"

### How to get there:

The Archeological Museum Narona is situated in Vid, in the direct vicinity (4 km) of the town of Metković in Southern Croatia. Vid is positioned half way between Split and Dubrovnik (on the south of Croatia) and on the crossroads to Medjugorje, Mostar i Sarajevo (Bosnia and Herzegovina).

Numerous tourist boards in Metković, Opuzen and Ploče facilitate the availability of tourist information.



### Plane

Nearest airport is CILIP in Dubrovnik (107 km).

☎ +385 (0)20 773 100

Second nearest is KASTELA in Split (157 km)

☎ +385 (0)21 203 555



### Bus

There is a central bus station located in Metković (3 km)

☎ +385 (0)60 365 365



### Car

The accessibility to Vid is guaranteed with the high quality state freeway as well as the regional and local infrastructure.



### Train

There is a central train station in Metković (3 km) with local and international trains.  
+385 (0)60 333 444

## The Roman Forum in Zadar

2

Southern Croatia, North Dalmatia:

GPS N 44°6' 53.7618" E

15°13' 44.2266" (Zadar),

N 44°14' 36.654" E

15°11' 2.8602" (Nin)



### Plane

Zadar airport



### Bus

The Zadar bus terminal is located at the intersection of Ulica Ante Starčevića and Ulica kralja Tvrtka (lat/long 44.106185, 15.241016), right next to the train station.



### Train

The train station is located at the intersection of Ulica Ante Starčevića and Ulica Ante Starčevića (lat/long 44.106647, 15.241961), right next to the inter-city bus station.



### By Boat

Jadrolinija Large ferries run every few days up and down the coast between Dubrovnik and Rijeka, stopping off at ports (including Zadar) and islands on the way. They also run almost daily ferries in summer to and from Ancona in Italy.

Local boats, Zadar is also a hub for local boats and hydrofoils in Northern Dalmatia. Services run to and from Olib, Mali Losinj, Ugljan, Dugi Otok, Premuda and others. Timetables and prices are available online from Adrialines.



### Car

Avax Zadar – Low cost car hire at Zadar Airport / Downtown  
+385 99 342 3001

Taxi Zadar – Taxi Service Zadar  
+385 91 472 8801

## Wine Regions

### Baranja

2

Located near Osijek in the north-east Croatia; GPS N 45°33' 35" E 18° 1' 13.46"

### More information

Tourist Board of Baranja, Imre Nagya 2, 31300 Beli Manastir,  
☎ 00385/31/702080;

[www.tzbaranje.hr](http://www.tzbaranje.hr)

e-mail: [info@tzbaranje.hr](mailto:info@tzbaranje.hr)

### Ilok

1

Easternmost Croatian town bordering Serbia; GPS N 45° 13' 19.5924", E 19°22'44.796"



### Boat

Danube River Boat Dock in Ilok

### More information

Tourist board of Ilok, Trg Nikole Iločkog 2, 32236 Ilok,

☎ +385 32 590020,

[www.turizamilok.hr](http://www.turizamilok.hr)

## SERBIA

### Roman Locations

#### Diana (Djerdap Region)

7

Diana is on the banks of the Danube near Karatas, in the vicinity of Kladovo; Pontes is near Kladovo, 3 kilometres east of Kostol (village), Traian's Bridge is at Kostol; GPS N 44°38'27" E 22°33'25"

#### How to get there:



Plane

Belgrade Airport Nikola Tesla



Bus

Kladovo Central Station

+381 19 808 457



Car

About 100 m from Belgrade-Tekija-Kladovo road, 8 km before Kladovo and about 250 km from Belgrade via M25 regional road



Train

Railway Central Station Kladovo



Boat

Kladovo port



Bicycle

Eurovelo 6 route, (part of the Eurovelo network established by the European Biking

Federation) follows the Loire and Rhine rivers, and continues to the mouth of the Danube.

#### Felix Romuliana (Zaječar)

6

Felix Romuliana, Gamzigrad, Timok valley, 11 kilometres from Zaječar; GPS N 43°53'57.4512" E 22°11'39.1344"

#### How to get there:



Plane

Belgrade Airport Nikola Tesla  
Niš Airport



Bus

Zaječar Central Bus Station

+381 19 421 454



Car

In terms of traffic, the position of the site is very good. Two important international roads pass through Zaječar, only 11 km away from Felix Romuliana: part of Corridor X: Paraćin - Zaječar - Vidin (Bulgaria); Niš - Zaječar - Negotin - Kladovo - Romania.



Train

Railway Central Station Zaječar

+381 19 440 830

#### Mediana (Niš)

9

Southern Serbia; Mediana is 6 kilometres east of Niš, in a suburban village Brzi Brod; GPS N 43°18'37" E 21°56'56"

#### How to get there:



Plane

Belgrade Airport Nikola Tesla  
Niš Airport Constantine the Great



Bus

Niš Central Station

+381 18 25 51 77



Car

Mediana is situated 5 km from Niš, leading to Niška banja spa, on the road to Sophia and Istanbul - ancient Via Militaris.

Niš is located on the international E-75 motorway and E-80 road. Distance from Belgrade is approximately 200km.



Train

Railway Central Station Niš

+381 18 36 16 722

#### Sirmium (Sremska Mitrovica)

10

Srem/Syrmia District, Autonomous Province of Vojvodina, Serbia; ca. 69 km west of Belgrade and 145 km from Kostolac (Roman site Viminacium); GPS N 44°58'12" E 19°36'37"

#### How to get there:



Plane

Belgrade Airport Nikola Tesla



Bus Central Station Sremska Mitrovica  
☎ +381 22 621 143



Sremska Mitrovica is located 76km from Belgrade via international E-70 motorway, and 49km from Novi Sad via regional road



Railway Central Station Sremska Mitrovica  
☎ +381 22 621 444

### Viminacium (Kostolac / Požarevac) 8

82 kilometres from Belgrade, near Požarevac and Kostolac; 35 kilometres from the E 75 junction (exit Požarevac); look for Kostolac B Power Plant, 1 kilometre further on (signposted); Viminacium has its own dock on the Danube (5 kilometres from the site; please call tourist office to organise transport); GPS N 44°46' 9" E 21°15' 30"

#### How to get there:



Belgrade Airport Nikola Tesla



Požarevac Central Station  
☎ +381 22 210 123



Viminacium is located 95km from Belgrade via the international E-75 motorway, 35km after the Požarevac



Railway Central Station Požarevac  
☎ +381 12 222 052



Viminacium has its own dock at Danube river bank, 5 km from the site



Eurovelo 6 - (part of the Eurovelo network established by the European Biking Federation) follows the Loire and Rhine rivers, and continues to the mouth of the Danube

#### Wine Regions

### Negotin Wine 5

Negotin is 290 kilometres east of Belgrade and 150 kilometres north of Niš, 13 kilometres from the Bulgarian border, 9 km from the Romanian border; road M 25 connects it with the North (Kladovo); GPS N 44°4' 16" E 22°30' 5"

#### More information:

**Tourist Organisation of Negotin**, Vojvode Mišića 25, 19300 Negotin, Serbia,

☎ +381 19 547555,  
[www.toon.org.rs](http://www.toon.org.rs), [www.wineserbia.rs/eng/winary/negotinski](http://www.wineserbia.rs/eng/winary/negotinski)

### Fruška Gora Wine 3

Northwest of Belgrade in Srem (Syrmia), Vojvodina, between the Sava and the Danube, Sremska Mitrovica and Novi Sad; 80 km from West to East, 15 km from South to North. Places of interest: Banoštor, Irg, Sremski Karlovci; GPS N 45°12' 9" E 19°56' 4"

#### More information:

Fruška Gora National Park, Zmajev trg 1, 21208 Sremska Kamenica, Serbia,  
☎ +381 21 463666,  
[www.npfruskagora.co.rs](http://www.npfruskagora.co.rs)

### South Banat Wine 4

Vršac municipality is about 80 kilometres northeast of Belgrade, 14 kilometres from the border with Romania; GPS N 45°6' 12" E 21°16' 28"

#### More information:

**Municipality of Vršac**, Trg pobede 1, 26300 Vršac, Serbia, ☎ +381 13 800501, [www.vrsac.com/active/en/home.html](http://www.vrsac.com/active/en/home.html)



## ROMANIA

### Roman Locations

#### Rosia Montana

15

National road DN 74 A and DJ 742 (7 km); the nearest city is Abrud (10 km), Alba Iulia is 80 km away; GPS N 46°18'13.25" E 23°06'52.30"

#### How to get there:



#### Plane

The closest airports are Cluj Napoca (135 km) and Sibiu (140 km).



#### Bus

There are regular buses coming from Abrud.



#### Car

The site is located in the centre of the Rosia Montana commune (70 km from Alba-Iulia, 40 km from Brad, 15 km from Campeni, 10 km from Abrud, 80 km from Turda and 135 km from Cluj-Napoca).



#### Boat

The harbours which offer basic facilities are in Orșova (287 km), Drobeta Turnu Severin (292 km) and Belgrade (370 km).



#### Bicycle

There are no cycling paths, but the traffic is fine on the secondary roads.

#### Histria Fortress

13

51 kilometres north of Constanta, 5 kilometres east of the modern commune of Istria, Constanta County, southeast Romania; access to Histria Fortress (Cetatea Histria) and Lake Sinoe (Lacul Sinoe) via DN 2A (heading for Tulcea, to the Ovidiu intersection), DN 22 (to Tariverde), local road DJ 22A (via Nuntasi to Histria); GPS N 44°32'49.45" E 28°46'23.10"

#### How to get there:



#### Plane

The closest airports are Constanta (49 km) and Bucharest (290 km).



#### Bus

There are regular buses coming from Constanta and Tulcea.



#### Car

National road Constanța - Tulcea, 54 km away from Constanța.



#### Train

The train stations are situated in Constanta (49 km), Cogeaia and Mihai Viteazu (the line Bucharest Tulcea).



#### Boat

The harbours which offer basic facilities are in Constanta (49 km) and Tulcea (87 km).



#### Bicycle

There are no cycling paths but the traffic is fine on the secondary roads.

#### Roman Camp Castrum and the city of Apulum

14

Central Romania, Alba County; 380 kilometres from Bucharest (route E 81), 100 kilometres from Cluj, 241 kilometres from Arad; GPS N 46°04'01.89" E 23°34'20.11"

#### How to get there:



#### Plane

The closest airports are Cluj Napoca (98 km) and Sibiu (70 km).



#### Bus

There are regular buses coming from Cluj Napoca, Sibiu and Deva.



#### Car

The site is located in the central part of Alba Iulia, with a local but quality road.



#### Boat

The harbours which offer basic facilities are in Orșova (250 km) and Drobeta Turnu Severin (270 km).



#### Bicycle

There are no special paths but the traffic is fine on the secondary roads.

## Colonia Ulpia Traiana 11

Hateg County, 8 kilometres from the Iron Gates of Transylvania, on route DN 68, some 160 kilometres north of Drobeta Turnu Severin; GPS N 45°30'59.88" E 22°47'08.22"

### How to get there:



Plane

The closest airports are Timișoara (150 km), Cluj Napoca (200 km), Sibiu (153 km) and Belgrade-SRB (275 km).



Bus

There are regular buses coming from Caransebes and Hațeg.



Car

National road Hațeg – Caransebes DN 68, 17 km from the town of Hațeg.



Train

The train stations are situated in Caransebes and Hațeg.



Boat

The harbours which offers basic facilities are in Orșova (143 km) and Drobeta Turnu Severin (170 km).



Bicycle

There are no cycling paths, but the traffic is fine on the secondary roads.

## Adamclisi 12

On the Bucharest – Calarasi – Ostrov – Constanta road, 70 kilometres southwest of Constanta; Constanta County, Dobrogea (Dobrudja) Region, Romania; GPS N 44°06'06.73 E 27°57'18.14"

### How to get there:



Plane

The closest airports are Constanta (63 km) and Bucharest (227 km).



Bus

There are regular buses coming from Constanta and Medgidia



Car

National road Constanța – Ostrov – Călărași – București, before entering Adamclisi village, at km 62, a branch of 1.5 km, leads to a plateau on the hill.



Train

The train stations are situated in Medgidia (51 km), Murfatlar (44 km) and Cernavoda (55 km).



Boat

The harbours which offer basic facilities are in Cernavoda (55 km) and Silistra-BG (71 km).



Bicycle

There are no cycling paths, but the traffic is fine on the secondary roads.

## Wine Regions

### Danube Terraces 9

South-Central Romania, along the northern banks of the Danube; GPS N 44°6'20.49" E 27°22'40.09"

### How to get there:



Plane

The closest airports are Constanta (63 km) and Bucharest (227 km).



Bus

There are regular buses coming from Constanta and Medgidia



Car

National road Constanța – Ostrov – Călărași – București, before entering Adamclisi village, at km 62, a branch of 1.5 km, leads to a plateau on the hill.



Train

The train stations are situated in Medgidia (51 km), Murfatlar (44 km) and Cernavoda (55 km).



Boat

The harbours which offer basic facilities are in Cernavoda (55 km) and Silistra-BG (71 km).



Bicycle

There are no cycling paths, but the traffic is fine on the secondary roads.

## Muntenia and Oltenia Hills

8

Located south of the central Carpathians, vineyards cover approximately 104,000 hectares. The vineyards are in the famous sunny wine belt (44°–45°N), on the slopes of the mountains towards the plains, but also in the region of southern Oltenia, or in areas close to the Danube.

### More information:

### Vie Vin Vinju Mare

Strada Unirii 2, Vinju Mare  
Mehedinți County

☎ + 40 252 350547

[www.vvm.ro](http://www.vvm.ro)

## Dobrogea Hills

7

West and South of the Danube Delta, around Constanta; Murfatlar/Basarabi: 19 km west of Constanta; GPS N44°11'00" E 28°25'00"

### How to get there:



Plane

The closest airports are Constanta (49 km) and Bucharest (290 km).



Bus

There are regular buses coming from Constanta and Tulcea.



Car

National road Constanța - Tulcea, 54 km away from Constanța.



Train

The train stations are situated in Constanta (49 km), Cogealac and Mihai Viteazu (the line Bucharest Tulcea).



Boat

The harbours which offer basic facilities are in Constanta (49 km) and Tulcea (87 km).



Bicycle

There are no cycling paths but the traffic is fine on the secondary roads.

## BULGARIA

### Roman Locations

### Ulpia Oescus

20

55 kilometres northwest of Pleven, near Gigen, signposted Ulpia Eskus; GPS N 43°42'30.6" E 24°27'58.84"

### How to get there:



Plane

The nearest airports are positioned 100 up to 150 km away from the sites

- Sofia
- Varna



Bus

- Sofia Central Bus Station
- Vidin Bus station

- Svishtov Bus station
- Ruse Bus Station
- Silistra Bus station
- Pleven Bus Station



Car

International highways are: E79 through city of Vidin, E70 and E85 passing through city of Ruse; Hemus/ A2 and 83; from Sofia to Pleven and Rousse highway Hemus/ A2 and 83.



Train

Further information concerning the Bulgarian State Railway is available at the following internet address: [www.bdz.bg](http://www.bdz.bg)



Boat

Bulgaria's ports are the following:

- Ruse
- Lom
- Vidin



Bicycle

Eurovelo 6 route (part of the Eurovelo network established by the European Biking Federation) follows the Loire and Rhine rivers, and continues to the mouth of the Danube.

### Kale Fortress

19

65 kilometres east of Vidin, Bulgaria. GPS N 43°37'24.1" E 22°40'37.69"

Magura Cave: 1.5 kilometres north of Rabisha, 45 km east of Vidin, 20 kilometres west of Belogradchik.

### How to get there:



#### Plane

The nearest airports are positioned 100 up to 150 km away from the sites

- Sofia
- Varna



#### Bus

- Sofia Central Bus Station
- Vidin Bus station
- Svishtov Bus station
- Ruse Bus Station
- Silistra Bus station
- Pleven Bus Station



#### Car

International highways are: E79 through city of Vidin, E70 and E85 passing through city of Ruse; Hemus/ A2 and 83; from Sofia to Pleven and Rousse highway Hemus/ A2 and 83.



#### Train

Further information concerning the Bulgarian State Railway is available at the following internet address: [www.bdz.bg](http://www.bdz.bg)



#### Boat

Bulgaria's ports are the following:

- Ruse
- Lom
- Vidin



#### Bicycle

Eurovelo 6 route (part of the Eurovelo network established by

the European Biking Federation) follows the Loire and Rhine rivers, and continues to the mouth of the Danube.

### Roman Legion Camp Novae

18

North-Central Bulgaria, Veliko Turnovo District, 80 kilometres from Pleven, 90 kilometres from Ruse; 251 kilometres west of Varna (the Black Sea), 237 kilometres northeast of Sofia; Svishtov/Novae archeological site: on the Danube, 2 km east of Svishtov, 10 minutes on foot from the town centre; GPS N 43°36'48.85" E 25°23'27.54"

### How to get there:



#### Plane

The nearest airports are positioned 100 up to 150 km away from the sites

- Sofia
- Varna



#### Bus

- Sofia Central Bus Station
- Vidin Bus station
- Svishtov Bus station
- Ruse Bus Station
- Silistra Bus station
- Pleven Bus Station



#### Car

International highways are: E79 through city of Vidin, E70 and E85 passing through city of Ruse; Hemus/ A2 and 83; from Sofia to Pleven and Rousse highway Hemus/ A2 and 83.



#### Train

Further information concerning the Bulgarian State Railway is available at the following internet address: [www.bdz.bg](http://www.bdz.bg)



#### Boat

Bulgaria's ports are the following:

- Ruse
- Lom
- Vidin



#### Bicycle

Eurovelo 6 route, (part of the Eurovelo network established by the European Biking Federation) follows the Loire and Rhine rivers, and continues to the mouth of the Danube.

### Sexaginta Prista

17

On the Danube, 300 kilometres from Sofia, 200 kilometres from the Black Sea, roads: E 79, E 70, E 85 and A 2/E 83 connect it to Sofia and Pleven; GPS N 43°50'77" E 25°57'14.91"

### How to get there:



#### Plane

The nearest airports are positioned 100 up to 150 km away from the sites

- Sofia – [www.sofia-airport.bg](http://www.sofia-airport.bg)
- Varna – [www.varna-airport.bg](http://www.varna-airport.bg)



#### Bus

- Sofia Central Bus Station
- Vidin Bus station
- Svishtov Bus station

- Ruse Bus Station
- Silistra Bus station
- Pleven Bus Station



### Car

International highways are: E79 through city of Vidin, E70 and E85 passing through city of Ruse; Hemus/ A2 and 83; from Sofia to Pleven and Rousse highway Hemus/ A2 and 83.



### Train

Further information concerning the Bulgarian State Railway is available at the following internet address: [www.bdz.bg](http://www.bdz.bg)



### Boat

Bulgaria's ports are the following:

- Ruse
- Lom
- Vidin



### Bicycle

Eurovelo 6 route (part of the Eurovelo network established by the European Biking Federation) follows the Loire and Rhine rivers, and continues to the mouth of the Danube.

## Roman Tomb

16

Northeast Bulgaria, on the right bank of the Danube;  
119 kilometres from Ruse,  
141 kilometres from Varna,  
431 kilometres from Sofia;  
GPS N 44°11'47" E 27°26'71"

## How to get there:



### Plane

The nearest airports are positioned 100 up to 150 km away from the sites

- Sofia
- Varna



### Bus

- Sofia Central Bus Station
- Vidin Bus station
- Svishtov Bus station
- Ruse Bus Station
- Silistra Bus station
- Pleven Bus Station



### Car

International highways are: E79 through city of Vidin, E70 and E85 passing through city of Ruse; Hemus/ A2 and 83; from Sofia to Pleven and Rousse highway Hemus/ A2 and 83.



### Train

Further information concerning the Bulgarian State Railway is available at the following internet address: [www.bdz.bg](http://www.bdz.bg)



### Boat

Bulgaria's ports are the following:

- Ruse
- Lom
- Vidin



### Bicycle

Eurovelo 6 route, (part of the Eurovelo network established by

the European Biking Federation) follows the Loire and Rhine rivers, and continues to the mouth of the Danube.

## Wine Regions

### North-Central Region (Pleven, Veliko Tarnovo)

12

GPS N 43°24'29.61" E  
24°37'13.0224"

### More Information:

**Wine Museum**, Kaylaka National Park, ul. Tottlebenov Val 1,  
5800 Pleven, Bulgaria,  
☎ +359 887 731537,

### North-East Region (Russe)

11

GPS N 43°50'58.4304" E  
25°57'18.7482"

### More information:

The Union of Enologists in Bulgaria, 9 "VasilLevski" str.,  
Suhindol, Bulgaria,  
✉ [seb@wineforum-bg.net](mailto:seb@wineforum-bg.net)  
☎ +359 88 647 5577

### North-West Region (Vidin)

10

GPS N 32°59'37.3158 E  
22°52'35.0148"

### More information:

Magura Cave Bat Gallery, c/o  
Magura Winery & Cave, Alexandar Pushkin Blvd. 5 (office),  
1618 Sofia, Bulgaria,  
☎ +359 2 8570015,  
✉ +359 2 9571623,  
[www.magurawinery.bg](http://www.magurawinery.bg)



- *Cultural Tours in Serbia and Balkans*
- *M.I.C.E. - Meetings, incentives, conferences and events*
- *Rural Tourism in Serbia and Balkans*
- *Soft Adventures and Educational and Experiential Travel*

**PANA COMP – Wonderland Travel Serbia**

**+381 21 466 075 | 466 076 | 466 077**

***info@panacomp.net***

***www.panacomp.net***



## THE MAGIC OF DANUBE:

There is no river like Danube, telling stories and legends, building castles and fortresses, protecting from the barbarians, offering wine and fish, tradition and culture. This is why it is best to explore Danube part by part and the easiest starting point is Belgrade. From there you can explore Danube by bus or boat from Pannonia through the Iron Gate till the Danube delta. The rock pulpit "Plocnik" in the national park Djerdap is one of Europe's most beautiful natural panoramic viewpoint over the Danube. The Danube Delta collect all the beauties and attractions on the end. Impressive and proud like a king, the Delta brings us unforgettable impressions and breathless views. You will have the best photo-safari ever. Surrounded by pelicans and sea roses you will enjoy the boat trip while testing fish and wine.



## ROUND TRIPS:

- Belgrade & Romantic Srem
- Wine & Ilok
- Impressive Decebal
- Danube & Hiking
- Impressive East Serbia
- Roman Heroes and Wine
- The Magic Danube Delta

SERBIA • CROATIA • BULGARIA • ROMANIA

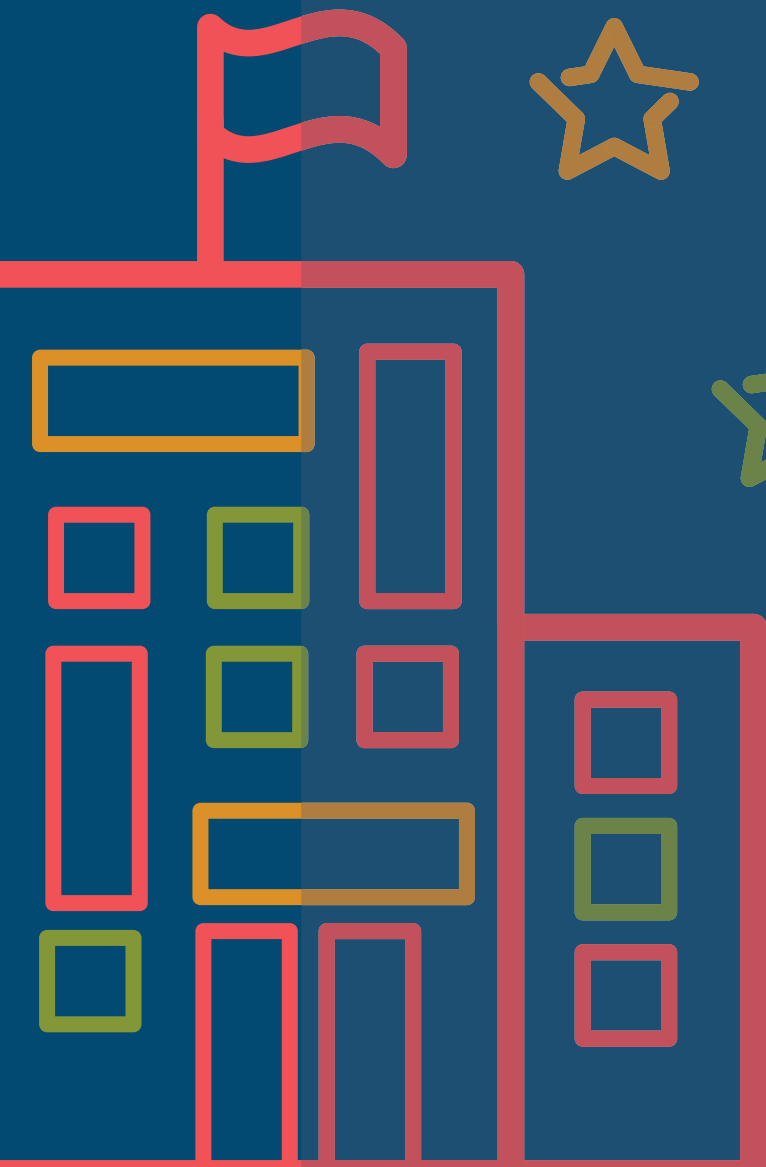


Beogradska 29, 11000 Belgrade, Serbia  
Phone: (+381) 11 334 67 76  
[www.insideserbia.com](http://www.insideserbia.com), [www.robinson.rs](http://www.robinson.rs)  
[info@robinson.rs](mailto:info@robinson.rs)

## WHAT MAKES US DIFFERENT:

**THE ROBINSON ADVENTURE TEAM** offers many packages, such as Inside the Balkan Round Trips, and themed tours like Nature and Culture, the Heart of Danube, Wine & Dine, and Hiking & Adventure. Our City break tours of Belgrade, Bucharest, Tulcea, Vidin and Ruse showcase the historic neighbourhoods, cultural attractions and architectural gems of these and other vibrant Danube cities. Our hidden Danube tours allow visitors to enjoy regional cuisine and wine, while sailing and exploring Roman archaeological sites. We offer weekend programs and 7/14 days round trips, you can book as guarantee tours. The highly professional staff is ready to exceed your expectations.

# WHERE TO STAY





## CROATIA

## HOTELS IN ILOK

1

**Hotel Dunav,**

📍 Julija Benešića 62, 32236 Ilok

☎ +385 32 596 500

📠 +385 32 590 134

🌐 [www.hoteldunavilok.com](http://www.hoteldunavilok.com)

✉ [hoteldunavilok@hotel-dunavilok.com](mailto:hoteldunavilok@hotel-dunavilok.com)

**Stari podrum**

📍 Dr. Franje Tuđmana 72

32236 Ilok

☎ +385 32 590 088

🌐 [www.ilocki-podrumi.hr](http://www.ilocki-podrumi.hr)

✉ [staripodrum@ilocki-podrumi.hr](mailto:staripodrum@ilocki-podrumi.hr)

**Villa «IVA»**

📍 Radićeva 23, 32236 Ilok

☎ +385 981 675 934

📠 +385 032 591 011

🌐 [www.villa-iva-ilok.net](http://www.villa-iva-ilok.net)

HOTELS IN OSIJEK  
AND UKOVAR

2

**Hotel Osijek**

📍 Šamačka 4, 31000 Osijek

☎ +385 31 230 333

🌐 [www.hotelosijek.hr](http://www.hotelosijek.hr)

**Hotel Lav**

📍 Josipa Jurja Strossmayera 18

32000 Vukovar

☎ +385 32 297 111

✉ [info@hotel-lav.hr](mailto:info@hotel-lav.hr)

🌐 [www.hotel-lav.hr](http://www.hotel-lav.hr)

## HOTELS IN ZADAR

2

**Hotel Iadera**

📍 Punta Skala, 23231 Petrcane

☎ +385 23 500 911

🌐 [www.falkensteiner.com/en/hotel/iadera](http://www.falkensteiner.com/en/hotel/iadera)

**Hotel Kolovare**

📍 Ulica Bože Perićića 14

23000 Zadar

☎ +385 23 203 200

✉ [info@hotel-kolovare.com](mailto:info@hotel-kolovare.com)

🌐 [www.hotel-kolovare.com](http://www.hotel-kolovare.com)

## HOTELS IN SPLIT

3

**Hotel Bellevue**

📍 Ulica bana Josipa Jelačića 2

21000 Split

☎ +385 21 347 499

✉ [rezervacije@hotel-belevue-split.hr](mailto:rezervacije@hotel-belevue-split.hr)

🌐 [www.hotel-bellevue-split.com](http://www.hotel-bellevue-split.com)

**Hotel Radisson Blue**

📍 Put Trstenika 19, 21000 Split

☎ +385 21 303 030

✉ [info@radissonblu.com](mailto:info@radissonblu.com)

🌐 [www.radissonblu.com](http://www.radissonblu.com)

**Hotel Marmont**

📍 Zadarska ulica 13, 21000 Split

☎ +385 21 308 060

✉ [booking@marmonthotel.com](mailto:booking@marmonthotel.com)

🌐 [www.marmonthotel.com](http://www.marmonthotel.com)

**Hotel Vestibul Palace**

📍 Ulica Iza Vestibula 4,

21000 Split

☎ +385 21 329 329

✉ [info@vestibulpalace.com](mailto:info@vestibulpalace.com)

🌐 [www.vestibulpalace.com](http://www.vestibulpalace.com)

## HOTELS IN DUBROVNIK

4

**Hotel Park**

📍 Šetalište kralja Zvonimira 39

20000 Dubrovnik

☎ +385 20 434 800

✉ [sales@grandhotel-park.hr](mailto:sales@grandhotel-park.hr)

🌐 [www.grandhotel-park.hr](http://www.grandhotel-park.hr)

**Hotel Petka**

📍 Općina Dubrovnik

20000 Dubrovnik

☎ +385 20 410 500

✉ [info@hotelpetka.hr](mailto:info@hotelpetka.hr)

🌐 [www.hotelpetka.hr](http://www.hotelpetka.hr)

**Hotel Grand Villa Argentina**

📍 Ulica Frana Supila 14

20000 Dubrovnik

☎ +385 20 300 300

## SERBIA

## HOTELS IN NOVI SAD

3

**Hotel Leopold I**

📍 Petrovaradinska tvrđava

21000 Novi Sad

☎ +381 21 488 7878

✉ [office@leopolddns.com](mailto:office@leopolddns.com)

🌐 [www.leopolddns.com](http://www.leopolddns.com)

HOTELS IN SREMSKI  
KARLOVCI

3

**Bermet Villa**

📍 Trg Branka Radićevića 5

21205 Sremski Karlovci

☎ +381 21 884 544

✉ [radovan.stankovic@bermetvilla.com](mailto:radovan.stankovic@bermetvilla.com)

[bermetvilla.com](http://bermetvilla.com)

🌐 [www.bermetvilla.com](http://www.bermetvilla.com)

**Hotel Premier President**

📍 Karađorđeva 2, Pedestrian Zone

21205 Sremski Karlovci

☎ +381 21 884 111

📠 +381 63 475 773

✉ [reservations@premierprezidenthotel.com](mailto:reservations@premierprezidenthotel.com)

[premierprezidenthotel.com](http://premierprezidenthotel.com)

🌐 [www.premierprezidenthotel.com](http://www.premierprezidenthotel.com)

## HOTELS IN KLADOVO

7

**Hotels Aquastar Danube**

📍 Dunavski kej 1, 19320

Kladovo

☎ +381 19 810 810

✉ info@hotelkladovo.rs

## HOTELS IN BELGRADE

**Hotel Astoria Beograd**

📍 Milovana Milovanovica 1

11000 Belgrade

☎ +381 11 360 5100

✉ hotel@astoria.rs

✉ info@astoria.rs

www.astoria.rs

**Hotel Prag Beograd**

📍 Kraljice Natalije 27

11000 Belgrade

☎ +381 11 321 4444

✉ hotelprag@sezampro.rs

www.hotelprag.rs

**Hotel M Beograd**

📍 Bulevar Oslobođenja 56a

11000 Belgrade

☎ +381 11 30 90 401,

☎ +381 11 30 90 40

✉ office@hotel-m.com

www.hotel-m.com

**Palace Hotel**

📍 Topličin Venac 23

11000 Belgrade

☎ +381 11 218 5585

www.palacehotel.co.rs

## HOTELS IN NEGOTIN

5

**Hotel Inex**

📍 Trg Đorđa Stanojevića 21

19300 Negotin

☎ +381 19 542 853

✉ inexhotel@live.com

www.hotelinexnegotin.com

**Vila Delux**

📍 Naselje Gradište BB

19300 Zaječar

☎ +381 19 548 885

☎ +381 63 84 64 116

✉ viladelux@gmail.com

www.vila-delux.eu

## HOTELS IN NIŠ

9

**Hotel My Place – Best western**

📍 Kej 29. Decembar BB

18000 Niš

☎ +381 18 293600

www.hotelmyplace.com

**Grand Hotel Niš**

📍 Vožda Karađorđa 12

18000 Nis, Serbia

☎ +381 18 505 700

✉ info@grandhotelnis.com

www.grandhotelnis.com

**Hotel Aleksandar**

📍 Njegoševa 81a

18000 Niš

☎ +381 18 562 333

✉ info@hotel-aleksandar.com

www.hotel-aleksandar.com

## BULGARIA

## HOTELS IN BELOGRADCHIK

19

**Hotel Skalite**

📍 Vazrazhdane square 2

3900 Belogradchik,

☎ +359 94 691 210

☎ +359 884 51 41 54

✉ reception@skalite.bg

www.skalite.bg

**Family Hotel Madona**

📍 Hristo Botev Str 26

3900 Belogradchik

☎ +359 93 655 546

☎ +359 89 845 7198

✉ madonainn@yahoo.com

**Madona Inn Falkovets**

📍 Road 114, Belogradchik – Lom

☎ +359 89 477 4746

✉ info@hanmadona.com

www.hanmadona.com

**Castle Cottage Guest House Belogradchik**

📍 Tsolo Todorov Str 36

3900, Belogradchik

☎ +359 898 623 727

☎ +359 894 362 886

✉ reservations@castlecottage.eu

www.castlecottage.eu/homeEN.html

## HOTELS IN VIDIN

10

**Hotel Anna Kristina \*\*\***

📍 Baba Vida str, 2, 3700 Vidin

☎ +359 94 606 038

✉ office@annakristinahotel.com

www.annakristinahotel.com

**Hotel Dunav \*\*\***

📍 ul. Edelvays 3, 3700 Vidin

☎ +359 94 600 174

✉ hotel\_dunav@abv.bg

www.hoteldunav.eu

**Hotel Neptun SPA**

📍 Dunavska Str. 8, 3700 Vidin

☎ +359 94 680 039

☎ +359 884 850 139

☎ +359 897 850 139

✉ hotel\_neptun\_vidin@abv.bg

www.hotelneptunvidin.com

## HOTELS IN RUSE

17

**Hotel Cosmopolitan**

◆ Dobri Nemirov st. 1-3,  
7000 Ruse

☎ +359 82 80 50 50

[www.cosmopolitanhotelbg.com](http://www.cosmopolitanhotelbg.com)

**Best Western –  
Bistra and Galina**

◆ Asparuh st. 8, 7000 Ruse

☎ +359 82 82 33 44

☎ +359 886 026 665

[www.bghotel.bg](http://www.bghotel.bg)

**Hotel Anna Palace**

◆ Knyazheska st. 4, 7000 Ruse

☎ +359 82 82 50 05

[www.annapalace.com](http://www.annapalace.com)

**Hotel Riga**

◆ Pridunavski Blvd. 22, 7000 Ruse

☎ +359 82 82 20 42

[www.hotel-riga.com](http://www.hotel-riga.com)

**Hotel Vega**

◆ Alexandrovska st. 48  
7000 Ruse

☎ +359 82 52 55 55;

☎ +359 882 949 000

[www.hotelvegaruse.com](http://www.hotelvegaruse.com)

**Charlino Plaza**

◆ Danube Square, 24 Kaloyan  
st, 7000 Ruse

☎ +359 82 82 57 07

[www.charlino-paza.com](http://www.charlino-paza.com)

**Teodora Palace**

◆ Bulgaria Blvd. 133, 7000 Ruse

☎ +359 82 59 00 00

[www.teodorapalace.bg](http://www.teodorapalace.bg)

**City Art Hotel**

◆ Veliko Tarnovo st. 5, 7000 Ruse

+359 885 158 403

[www.cityarthotel.com](http://www.cityarthotel.com)

## HOTELS IN SVISHTOV

18

**Family Hotel Nove**

◆ Todor Hrulev 15, 5250 Svishtov

☎ +359 895 561 097

✉ noveli.sv@gmail.com

[www.hotelnove.bg](http://www.hotelnove.bg)

**Manastira Hotel Complex**

◆ 2 km south-easterly from

Svishtov, next to the Virgin

Mary's Assumption Monastery

5250 Svishtov

☎ +359 878 31 67

☎ +359 896 82 87 48

✉ manastira\_sv@abv.bg

**Hotel Ivanoff**

◆ Petar Angelov str. 15,  
5250 Svishtov

☎ +359 887 28 81 17

✉ hotel\_ivanoff@abv.bg

[www.hotel-ivanoff.com](http://www.hotel-ivanoff.com)

**Hotel Kaleto**

◆ Toma Pantelev str. 2

5250 Svishtov

☎ +359 878 91 91 71

[www.kaleto.net](http://www.kaleto.net)

**Perun Family Hotel**

◆ Pametnitsite Park

5250 Svishtov

☎ +359 897 08 91 09

☎ +359 897 08 91 15

✉ info@hotelperun.com

[www.HotelPerun.com](http://www.HotelPerun.com)

## ROMANIA

## HOTELS IN ALBA IULIA

14

**Hotel Medieval**

◆ Nr. 13 Str. Militari

510009 Alba Iulia

☎ +40 374 07 99 90

✉ office@hotel-medieval.ro

[www.hotel-medieval.ro](http://www.hotel-medieval.ro)

**La Maison de Caroline**

◆ 11 Str. Primaverii

(former Rubin Patitia str.),

501010 Alba Iulia

☎ +40 358 101 227

✉ contact@lmdc.ro

[www.lamaisondecaroline.ro](http://www.lamaisondecaroline.ro)

**Vila Preciosa**

◆ Alba Iulia, Romania,

Str. Lucian Blaga, Nr. 10,

Loc. Alba Iulia, Jud. Alba

☎ +40 258 814 033

☎ +40 731 30 36 57

✉ office@preciosa.ro

[www.preciosa.ro](http://www.preciosa.ro)

**Marylou Pension**

◆ 18 Str. Lalelelor,

510217 Alba Iulia

☎ +40 358 116 824

☎ +40 731 325 310

✉ office@pensiunea-marylou.ro

**Vila Apulum**

◆ 37, Str. Lalelelor

510041 Alba Iulia

☎ +40 358 110 164

☎ +40 744 191 697

✉ apulumturism@gmail.com

[www.vilaapulum.ro](http://www.vilaapulum.ro)

**Orhideea Residence**

◆ Strada Orhideelor 9, Jud.

Alba. Alba Iulia, Romania,

☎ +40 727 362 628

✉ office@orhideearesidence.com

[www.orhideearesidence.com](http://www.orhideearesidence.com)

## HOTELS IN BUCHAREST

### Hotel Astoria Beograd

◆ Milovana Milovanovica 1  
11000 Belgrade

☎ +381 11 360 5100

✉ hotel@astoria.rs

✉ info@astoria.rs

[www.astoria.rs](http://www.astoria.rs)

### Hotel Cismigiu

◆ 38 Bd Queen Elisabeth  
050017 Bucharest

☎ +40 314 03 05 00

✉ reservations@hotelcismigiu.ro

[www.hotelcismigiu.ro](http://www.hotelcismigiu.ro)

### Rembrandt Hotel

◆ 11 Smardan St.  
030071 Bucharest

☎ +40 21 313 9315

✉ info@rembrandt.ro

[www.rembrandt.ro](http://www.rembrandt.ro)

### Radisson Blu Hotel

◆ 63-81 Calea Victoriei,  
Sector 1, 10065 Bucharest

☎ +40 21 31 1900

✉ info.bucharest@

radissonblu.com

[www.radissonblu.com/hotel-bucharest](http://www.radissonblu.com/hotel-bucharest)

### Le Boutique Hotel Moxa

Bucharest Romania

◆ 129 Calea Victoriei cross-  
roads 4 Mihail Moxa Street,  
Sector 1, 010961 Bucharest

☎ +40 21 650 55 55

✉ office@hotelmoxa.com

[www.hotelmoxa.com](http://www.hotelmoxa.com)

## HOTELS IN ORSOVA

8

### Hotel Apolodor

◆ Strada 1 Decembrie 1918,  
225200 Orșova

☎ +40 352 415 925

✉ office@hotelapolodor.ro

[www.hotelapolodor.ro](http://www.hotelapolodor.ro)

## HOTELS IN DROBETA TURNU SEVERIN

### Hotel Club G

◆ 24 Dr. Saidac Street  
220125 Mehedinti, Drobeta  
Turnu Severin

☎ +40 252 32 22 77

☎ +40 744 63 11 00

✉ hotel@clubg.ro

[www.clubg.ro](http://www.clubg.ro)

### Hotel Continental

◆ No.2 Bd. Carol I,  
220111 Drobeta Turnu Severin

☎ +40 372 528 828

✉ drobeta@continentalhotels.ro

[www.continentalhotels.ro/Continental-Drobeta-Turnu-Severin](http://www.continentalhotels.ro/Continental-Drobeta-Turnu-Severin)

## HOTELS IN HUNEDOARA

11

### Pensiunea turistica "SARMIS" \*\*\*

◆ 82 Str. Sarmizegetusa  
Judetul Hunedoara

☎ +40 744 794 051

✉ office@pensiuneasarmis.ro

[www.pensiuneasarmis.ro](http://www.pensiuneasarmis.ro)

### Pensiunea Dacica

◆ No.1 Sat Alun, Comuna  
Bosorod, Jud. Hunedoara

☎ +40 354 086 162

✉ pensiunea@dacica.ro

[www.pensiunea.dacica.ro](http://www.pensiunea.dacica.ro)

## HOTELS IN TULCEA

7

### Hotel Delta & Hotel Delta

◆ No. 2 Str. Isacsei,  
820169 Tulcea

☎ +40 240 514 720,

☎ +40 240 514 721

✉ office@hoteldelta.eu

✉ rezervari@hoteldelta.eu

[www.hoteldelta.eu](http://www.hoteldelta.eu)

### Hotel Europolis

◆ Tulcea, Romania,  
Str. Pacii No. 20,  
820033 Tulcea

☎ +40 240 512 443

✉ office@europolis.ro

[www.europolis.ro](http://www.europolis.ro)

## HOTELS IN CONSTANTA

9

### Hotel Ibis

◆ Constanta, Romania  
nr 39B-41, Str. Mircea cel  
Batran Constanta

☎ +40 241 508 050

✉ reservations.constant@

ibishotels.ro

[www.ibishotels.ro/](http://www.ibishotels.ro/)

### Hotel Balada Nej

◆ Blvd 1 Decembrie 1  
Constanta, Romania

☎ +40 241 633 909

✉ reception@hotel-balada-nej.ro

[www.hotel-balada-nej.ro](http://www.hotel-balada-nej.ro)

### Hotel IAKI

◆ Mamaia Resort, Constanta,  
Romania, 900001 Mamaia

☎ +40 241 831 025

✉ reservation@iaki.ro

[www.iaki.ro](http://www.iaki.ro)

*Cycling Serbia  
with us*



Incoming Tour operator for cycling tourism for Serbia

mob. +381 (0) 63 155 11 97

mob. +381 (0) 64 905 89 72

e-mail. [biketourserbia@gmail.com](mailto:biketourserbia@gmail.com)

internet. [www.biketourserbia.com](http://www.biketourserbia.com)



# **globtour event**

**Your incoming partner for Croatia and Region**

**WE ARE ONE OF THE LEADING CROATIAN  
FULLY LICENSED TRAVEL AGENCIES WITH  
MORE THAN 35 YEARS OF EXPERIENCE  
IN THE TRAVEL INDUSTRY.**

Since 1997 we have been the Carlson Wagonlit Travel partner for Croatia. Together we have successfully implemented the highest standards of services as required by business and leisure travelers worldwide.

As well as corporate travel, we have a longstanding tradition in luxury individual and group travel, serviced by incoming and outgoing divisions. To keep up with the growing demand for Meetings and Events, we have specialized as a Destination and Event Management Company and Professional Congress Organizer offering only the very best from Croatia and the region.

Our mission is to provide the highest level of services for all our national and international clients by embracing cultural differences and considering social responsibilities.

**<http://www.globtour.hr>**



# EXPLORE Bulgaria



ODYSSEIA-IN

[odyssea@omega.bg](mailto:odyssea@omega.bg)  
[www.wandernbulgarien.eu](http://www.wandernbulgarien.eu)  
[www.odyssea-in.com](http://www.odyssea-in.com)



Off-the-beaten track experiences  
with special care for the local  
environment and culture:

- hiking, biking,
- rural and eco holidays,
- wine-tasting and gourmet tours,
- monastery and pilgrimage tours

Explore and savour the charming  
Danube Plain wines, capturing the unique  
terroir and the true character of the land

Discover the religious diversity  
and the cultural monuments and World  
Heritage sites along the Lower Danube

>CIP - Каталогизација у публикацији -  
 >Народна библиотека Србије, Београд  
 >  
 >634.8(497 Подунавље)(036)  
 >338.48(37)(036)  
 >  
 >WERNER, Michael  
 >The Roman Emperors and Danube Wine Route for You / [Michael Werner,  
 >Vlasta Klarić, Jürgen Sorges]. - Belgrade : National Tourism Organisation  
 >of Serbia, 2015 (Beograd : Službeni glasnik). - [25] str. : fotogr. ; 30  
 >cm  
 >  
 >Podatak o autorima preuzet iz kolofona. - Tiraž 2.000.  
 >  
 >ISBN 978-86-6005-394-9  
 >1. Klarić, Vlasta [аутор] 2. Sorges, Jürgen [аутор]  
 >а) Винарство - Подунавље - Водичи б) Градови, римски - Водичи  
 >COBISS.SR-ID 213355276

## IMPRESSUM:

### Title:

The Roman Emperors and Danube  
Wine Route For You

### Publisher:

National Tourism Organisation of  
Serbia

### ISBN:

978-86-6005-394-9

### Editor:

Danko Ćosić, Tatjana Antić

### Authors:

Michael Werner, Vlasta Klarić, Jürgen Sorges

### Photo used:

Croatian Chamber of Commerce, National  
Tourism Organisation of Serbia, Romanian  
National Authority for Tourism, Ministry of  
Economy and Energy of Bulgaria, Miodrag  
Bogdanović, Mihail Mihov



This project is co-funded by  
the European Union

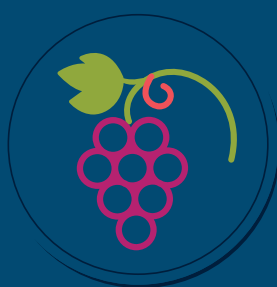
"The sole responsibility of this publication lies with the author. The European Commission is not responsible for any use that may be made of the information contained therein."







Life and lifestyle  
of the Roman emperors



Wines from  
the Danube region



Orientation map  
of the Route



Impressive  
natural settings



Where to eat



How to travel



Events and festivals



Where to stay

